



[Go to Product page](#)

Datasheet for ABIN1347624

C7orf10 Protein (AA 1-471) (GST tag)

1 Image

Overview

Quantity:	10 µg
Target:	C7orf10
Protein Characteristics:	AA 1-471
Origin:	Human
Source:	Wheat germ
Protein Type:	Recombinant
Purification tag / Conjugate:	This C7orf10 protein is labelled with GST tag.
Application:	Antibody Array (AA), Affinity Purification (AP), ELISA, Western Blotting (WB)

Product Details

Purpose:	C7orf10 (Human) Recombinant Protein (P01)
Sequence:	MPSETHAMLA TLARVAALRR TCLFSGRGGG RGLWTGRPQS DMNNIKPLEG VKILDLTRVL AGPFATMNLG DLGAEVIKVE RPGAGDDTRT WGPPFVGTES TYYLSVNRNK KSIIVNIKDP KGVKIIKELA AVCDVFVENY VPGKLSAMGL GYEDIDEIAP HIIYCSITGY GQTGPISQRA GYDAVASAVS GLMHITGPEN GDPVRPGVAM TDLATGLYAY GAIMAGLIQK YKTGKGLFID CNLLSSQVAC LSHIAANYLI GQKEAKRWGT AHGSIVPYQA FKTKDGYIVV GAGNNQQFAT VCKILDPEL IDNSKYKTNH LRVHNRKELI KILSERFEEE LTSKWLYLFE GSGVPYGPIN NMKNVFAEPQ NAVSGFQSLH HSLAHGPFLLH LQGSARVLHN GLVMEMEHPT VGKISVPGPA VRYSKFKMSE ARPPPLLGQH TTHILKEVLR YDDRAIGELL SAGVVDQHET H
Characteristics:	Human C7orf10 full-length ORF (AAH98318.1, 1 a.a. - 471 a.a.) recombinant protein with GST-tag at N-terminal.

Product Details

Purification: in vitro wheat germ expression system

Target Details

Target: C7orf10

Alternative Name: C7orf10 ([C7orf10 Products](#))

Background: Full Gene Name: chromosome 7 open reading frame 10
Synonyms: DERP13,FLJ11808,ORF19

Gene ID: 79783

Application Details

Application Notes: Optimal working dilution should be determined by the investigator.

Comment: Preparation method: in vitro, wheat germ expression system
Product Quality tested by: 12.5% SDS-PAGE Stained with Coomassie Blue.

Restrictions: For Research Use only

Handling

Buffer: 50 mM Tris-HCl, 10 mM reduced Glutathione, pH =8.0 in the elution buffer.

Handling Advice: Aliquot to avoid repeated freezing and thawing.

Storage: -80 °C

Storage Comment: Best use within three months from the date of receipt of this protein.

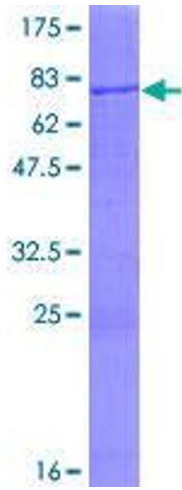


Image 1.