

Datasheet for ABIN1347629

**TTDN1 Protein (AA 80-179) (GST tag)**[Go to Product page](#)**1** Image

## Overview

Quantity:	10 µg
Target:	TTDN1 (MPLKIP)
Protein Characteristics:	AA 80-179
Origin:	Human
Source:	Wheat germ
Protein Type:	Recombinant
Purification tag / Conjugate:	This TTDN1 protein is labelled with GST tag.
Application:	ELISA, Western Blotting (WB), Antibody Array (AA), Affinity Purification (AP)

## Product Details

Purpose:	C7orf11 (Human) Recombinant Protein (Q01)
Sequence:	SPSPGGYPGS YSRSPAGSQQ QFGYSPGQQQ THPQGSPTS TPFGSGRVRE KRMSNELENY FKPSMLEDPW AGLEPVSVD ISQQYSNTQT FTGKKGRYFC
Characteristics:	Human C7orf11 partial ORF ( NP_619646.1, 80 a.a. - 179 a.a.) recombinant protein with GST-tag at N-terminal.
Purification:	in vitro wheat germ expression system

## Target Details

Target:	TTDN1 (MPLKIP)
Alternative Name:	C7orf11 ( <a href="#">MPLKIP Products</a> )

## Target Details

Background:	Full Gene Name: chromosome 7 open reading frame 11 Synonyms: ABHS,ORF20,TTDN1
Gene ID:	136647
NCBI Accession:	<a href="#">NM_138701</a>

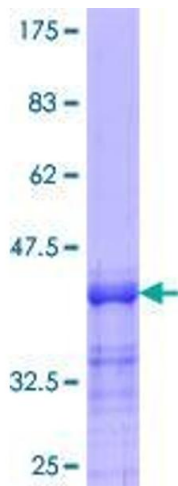
## Application Details

Application Notes:	Optimal working dilution should be determined by the investigator.
Comment:	Preparation method: in vitro, wheat germ expression system Product Quality tested by: 12.5% SDS-PAGE Stained with Coomassie Blue.
Restrictions:	For Research Use only

## Handling

Buffer:	50 mM Tris-HCl, 10 mM reduced Glutathione, pH =8.0 in the elution buffer.
Handling Advice:	Aliquot to avoid repeated freezing and thawing.
Storage:	-80 °C
Storage Comment:	Best use within three months from the date of receipt of this protein.

## Images



**Image 1.**