



[Go to Product page](#)

Datasheet for ABIN1347667
C8orf45 Protein (AA 1-585) (GST tag)

1 Image

Overview

Quantity:	10 µg
Target:	C8orf45
Protein Characteristics:	AA 1-585
Origin:	Human
Source:	Wheat germ
Protein Type:	Recombinant
Purification tag / Conjugate:	This C8orf45 protein is labelled with GST tag.
Application:	ELISA, Western Blotting (WB), Antibody Array (AA), Affinity Purification (AP)

Product Details

Purpose:	C8orf45 (Human) Recombinant Protein (P01)
Sequence:	MKEAALIYLD RSGGLQKFID DCKYYNSKQ SYAVYRFKIL INPSDVVELD AELGNHILHQ PLKAAEVFQS VCFIAVKTLS LIGQLQTETQ INIVLKLTHL PPLPSYGLDL CEFPLDYTSQ RFYMMQGIVI AMTTITKYTQ GARFLCSDEA CPLSKGFQYI RVHVPGATES ATIRNDFLCN LCASSLQEDR KFRVLGDKQI VEIATKALR AFQGYSNQPF FRFQSLTIFL RDESVNKMNI GNEYKIIGIP TCVKTSQTAV CIEANSITFC NSKVPSGISD NFRCLLSLTS SSCWKFTAIL ANIFASQITP PGTYNLLKLC LLMSLVQTTD RNKELEDCLD ILIITSDTLL IDRLLNFSIN LVPRGIRHLV STEIFPTLSR NKYGTGAVSI QAGSALLAKG GICFIGDLAS HKKDKLEQLQ TVLESRSITV YIPGKKFGED IDQQMTFPVQ CSFWSFVDVD SSSRRNAQKI NTLIGQMDCS LIPANLVEAF GLLINCNESS PCHPFLPTVQ HTLNKAINPE GLFYAASRQF TTEDFEKLLA FAKNLNVEFS LEAERMTHGY YLASRRIRTG SVCGSKLSAS ALKYL
Characteristics:	Human C8orf45 full-length ORF (NP_775789.2, 1 a.a. - 585 a.a.) recombinant protein with GST-

Product Details

tag at N-terminal.

Purification: in vitro wheat germ expression system

Target Details

Target: C8orf45

Alternative Name: C8orf45 ([C8orf45 Products](#))

Background: Full Gene Name: chromosome 8 open reading frame 45
Synonyms: FLJ25692

Gene ID: 157777

NCBI Accession: [NM_173518](#)

Application Details

Application Notes: Optimal working dilution should be determined by the investigator.

Comment: Preparation method: in vitro, wheat germ expression system
Product Quality tested by: 12.5% SDS-PAGE Stained with Coomassie Blue.

Restrictions: For Research Use only

Handling

Buffer: 50 mM Tris-HCl, 10 mM reduced Glutathione, pH =8.0 in the elution buffer.

Handling Advice: Aliquot to avoid repeated freezing and thawing.

Storage: -80 °C

Storage Comment: Best use within three months from the date of receipt of this protein.

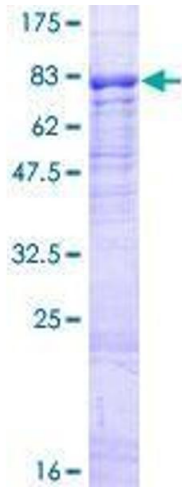


Image 1.