



[Go to Product page](#)

Datasheet for ABIN1347674
C8orf76 Protein (AA 1-380) (GST tag)

1 Image

Overview

Quantity:	10 µg
Target:	C8orf76
Protein Characteristics:	AA 1-380
Origin:	Human
Source:	Wheat germ
Protein Type:	Recombinant
Purification tag / Conjugate:	This C8orf76 protein is labelled with GST tag.
Application:	ELISA, Western Blotting (WB), Antibody Array (AA), Affinity Purification (AP)

Product Details

Purpose:	C8orf76 (Human) Recombinant Protein (P01)
Sequence:	MDSGCWLFGG EFEDSVFEER PERRSGPPAS YCAKLCEPQW FYEETESSDD VEVLTLKKFK GDLAYRRQEY QKALQEYSSI SEKLSSTNFA MKRDVQEGQA RCLAHLGRHM EALEIAANLE NKATNTDHLT TVLYLQLAIC SSLQNLEKTI FCLQKLISLH PFNPWNWGKL AEAYLNLGPA LSAALASSQK QHSFTSSDKT IKSFFPHSGK DCLLCFPETL PESSLFSVEA NSSNSQKNEK ALTNIQNCMA EKRETVLIET QLKACASFIR TRLLLQFTQP QQTSFALERN LRTQQEIEDK MKGFSFKEDT LLLIAEVMGE DIPEKIKDEV HPEVKCVGSV ALTALVTVSS EEFEDKWFRK IKDHFPCPFEN QFHTEIQILA
Characteristics:	Human C8orf76 full-length ORF (NP_116236.1, 1 a.a. - 380 a.a.) recombinant protein with GST-tag at N-terminal.
Purification:	in vitro wheat germ expression system

Target Details

Target:	C8orf76
Alternative Name:	C8orf76 (C8orf76 Products)
Background:	Full Gene Name: chromosome 8 open reading frame 76 Synonyms: FLJ14825,MGC9784
Gene ID:	84933
NCBI Accession:	NM_032847

Application Details

Application Notes:	Optimal working dilution should be determined by the investigator.
Comment:	Preparation method: in vitro, wheat germ expression system Product Quality tested by: 12.5% SDS-PAGE Stained with Coomassie Blue.
Restrictions:	For Research Use only

Handling

Buffer:	50 mM Tris-HCl, 10 mM reduced Glutathione, pH =8.0 in the elution buffer.
Handling Advice:	Aliquot to avoid repeated freezing and thawing.
Storage:	-80 °C
Storage Comment:	Best use within three months from the date of receipt of this protein.

Images

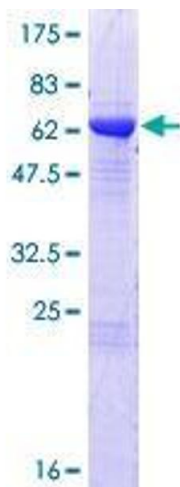


Image 1.