



[Go to Product page](#)

Datasheet for ABIN1347679

C8ORF82 Protein (AA 1-208) (GST tag)

1 Image

Overview

Quantity:	25 µg
Target:	C8ORF82
Protein Characteristics:	AA 1-208
Origin:	Human
Source:	Wheat germ
Protein Type:	Recombinant
Purification tag / Conjugate:	This C8ORF82 protein is labelled with GST tag.
Application:	ELISA, Western Blotting (WB), Antibody Array (AA), Affinity Purification (AP)

Product Details

Purpose:	MGC70857 (Human) Recombinant Protein (P01)
Sequence:	MGSPTLPTGP AHQGVGLRS GAPLSEARRT SYRRRLPSVW SWARRPWEPS ALSTRTLHPP DPQFLVTFFS RLRPNRSGRY EAAFPLSPC GRERNFLRCE DRPVVFTHLL TADHGPPRLS YCGGGEALAV PFEPARLLPL AANGRLYHPA PERAGGVGLV RSALAFELSA CFEYGPGAPA LPSHVRWQGR RLALTMDLAP LLLAARSP
Characteristics:	Human MGC70857 full-length ORF (AAH73936.1, 1 a.a. - 208 a.a.) recombinant protein with GST-tag at N-terminal.
Purification:	in vitro wheat germ expression system

Target Details

Target:	C8ORF82
---------	---------

Target Details

Alternative Name:	C8orf82 (C8ORF82 Products)
Background:	Full Gene Name: chromosome 8 open reading frame 82 Synonyms: MGC70857
Gene ID:	414919

Application Details

Application Notes:	Optimal working dilution should be determined by the investigator.
Comment:	Preparation method: in vitro, wheat germ expression system Product Quality tested by: 12.5% SDS-PAGE Stained with Coomassie Blue.
Restrictions:	For Research Use only

Handling

Buffer:	50 mM Tris-HCl, 10 mM reduced Glutathione, pH =8.0 in the elution buffer.
Handling Advice:	Aliquot to avoid repeated freezing and thawing.
Storage:	-80 °C
Storage Comment:	Best use within three months from the date of receipt of this protein.

Images

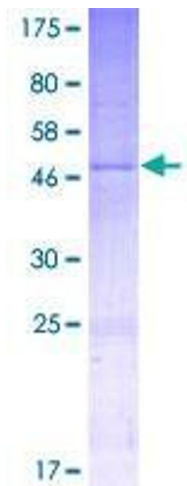


Image 1.