

Datasheet for ABIN1347684
ERCC6L2 Protein (AA 1-523) (GST tag)



[Go to Product page](#)

1 Image

Overview

Quantity:	10 µg
Target:	ERCC6L2
Protein Characteristics:	AA 1-523
Origin:	Human
Source:	Wheat germ
Protein Type:	Recombinant
Purification tag / Conjugate:	This ERCC6L2 protein is labelled with GST tag.
Application:	ELISA, Western Blotting (WB), Antibody Array (AA), Affinity Purification (AP)

Product Details

Purpose:	LOC375748 (Human) Recombinant Protein (P01)
Sequence:	<p>MQKERELQET IYFKNTWPAC MFLIVAPLSV LYNWKDELDT WGYFRVTVLH GNRKDNELIR VKQRKCEIAL TTYETLRLCL DELNSLEWSA VIVDEAHRK NPKARVTEVM KALKCNVRIG LTGTILQNNM KELWCVMDWA VPGLLGSPTY FKKQFSDPVE HGQRHTATKR ELATGRKAMQ RLAKKMSGWF LRRTKTLIKD QLPKKEDRMV YCSLTDFQKA VYQTVLETED VTLILQSSEP CTCRSGQKRR NCCYKTNSHG ETVKTLYLSY LTVLQKVANH VALLQAASTS KQQETLIKRI CDQVFSRFPD FVQKSKDAAF ETLSDPKYSG KMKVLQQLLN HCRKNRDKVL LFSFSTKLLD VLQQYCMASG LDYRRLDGST KSEERLKIVK EFNSTQDVNI CLVSTMAGGL GLNFVGANVV VLFDPWTNPA NDLQAIDRAY RIGQCRDVKV LRLISLGTVE EIMYLRQIYK QQLHCVVVGS ENAKRYFEAV QGSKEHQGEL FGIHNLFKFR SQGSCLTKDI LEV</p>
Characteristics:	Human LOC375748 full-length ORF (AAH35183.1, 1 a.a. - 523 a.a.) recombinant protein with GST-tag at N-terminal.

Product Details

Purification: in vitro wheat germ expression system

Target Details

Target: ERCC6L2

Alternative Name: C9orf102 ([ERCC6L2 Products](#))

Background: Full Gene Name: chromosome 9 open reading frame 102
Synonyms: FLJ37706,MGC30192,MGC43364,RAD26L,SR278

Gene ID: 375748

Application Details

Application Notes: Optimal working dilution should be determined by the investigator.

Comment: Preparation method: in vitro, wheat germ expression system
Product Quality tested by: 12.5% SDS-PAGE Stained with Coomassie Blue.

Restrictions: For Research Use only

Handling

Buffer: 50 mM Tris-HCl, 10 mM reduced Glutathione, pH =8.0 in the elution buffer.

Handling Advice: Aliquot to avoid repeated freezing and thawing.

Storage: -80 °C

Storage Comment: Best use within three months from the date of receipt of this protein.

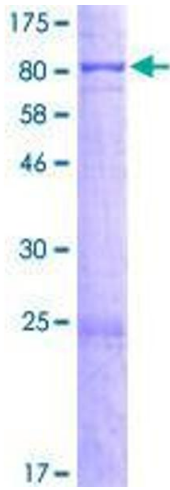


Image 1.