



[Go to Product page](#)

Datasheet for ABIN1347702

C9orf169 Protein (AA 1-144) (GST tag)

1 Image

Overview

Quantity:	10 µg
Target:	C9orf169 (C9ORF169)
Protein Characteristics:	AA 1-144
Origin:	Human
Source:	Wheat germ
Protein Type:	Recombinant
Purification tag / Conjugate:	This C9orf169 protein is labelled with GST tag.
Application:	Antibody Array (AA), Affinity Purification (AP), ELISA, Western Blotting (WB)

Product Details

Purpose:	MGC59937 (Human) Recombinant Protein (P01)
Sequence:	MDPQEMVVKN PYAHISIPRA HLRPDLGQQL EVASTCSSSS EMQPLPVGPC APEPTHLLQP TEVPGPKGAK GNQGAAPIQN QQAWQQPGNP YSSSQRQAGL TYAGPPPVGR GDDIAHHCCC CPCCHCCHCP PFCRCHSCCC CVIS
Characteristics:	Human MGC59937 full-length ORF (NP_945352.1, 1 a.a. - 144 a.a.) recombinant protein with GST-tag at N-terminal.
Purification:	in vitro wheat germ expression system

Target Details

Target:	C9orf169 (C9ORF169)
Alternative Name:	C9orf169 (C9ORF169 Products)

Target Details

Background:	Full Gene Name: chromosome 9 open reading frame 169 Synonyms: MGC59937
Gene ID:	375791
NCBI Accession:	NM_199001

Application Details

Application Notes:	Optimal working dilution should be determined by the investigator.
Comment:	Preparation method: in vitro, wheat germ expression system Product Quality tested by: 12.5% SDS-PAGE Stained with Coomassie Blue.
Restrictions:	For Research Use only

Handling

Buffer:	50 mM Tris-HCl, 10 mM reduced Glutathione, pH =8.0 in the elution buffer.
Handling Advice:	Aliquot to avoid repeated freezing and thawing.
Storage:	-80 °C
Storage Comment:	Best use within three months from the date of receipt of this protein.

Images

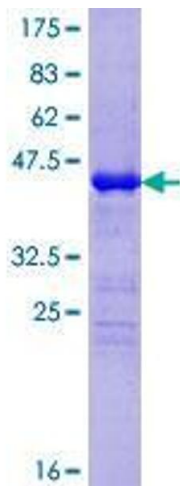


Image 1.