

Datasheet for ABIN1347712
**Ferric-Chelate Reductase 1 Like (FRRS1L) (AA 158-267)
protein (GST tag)**



[Go to Product page](#)

1 Image

Overview

Quantity:	10 µg
Target:	Ferric-Chelate Reductase 1 Like (FRRS1L)
Protein Characteristics:	AA 158-267
Origin:	Human
Source:	Wheat germ
Protein Type:	Recombinant
Purification tag / Conjugate:	GST tag
Application:	ELISA, Western Blotting (WB), Antibody Array (AA), Affinity Purification (AP)

Product Details

Purpose:	C9orf4 (Human) Recombinant Protein (Q01)
Sequence:	FRYGKPGCNA ETCDYFLSYR MIGADVEFEL SADTDGWWAV GFSSDKKMGG DDVMACVHDD NGRVRIQHFY NVGQWAKEIQ RNPARDDEGV FENNRVTCRF KRPVNVPRDE
Characteristics:	Human C9orf4 partial ORF (NP_055149, 158 a.a. - 267 a.a.) recombinant protein with GST-tag at N-terminal.
Purification:	in vitro wheat germ expression system

Target Details

Target:	Ferric-Chelate Reductase 1 Like (FRRS1L)
Alternative Name:	C9orf4 (FRRS1L Products)

Target Details

Background:	Full Gene Name: chromosome 9 open reading frame 4 Synonyms: CG-6,CG6
Gene ID:	23732
NCBI Accession:	NM_014334

Application Details

Application Notes:	Optimal working dilution should be determined by the investigator.
Comment:	Preparation method: in vitro, wheat germ expression system Product Quality tested by: 12.5% SDS-PAGE Stained with Coomassie Blue.
Restrictions:	For Research Use only

Handling

Buffer:	50 mM Tris-HCl, 10 mM reduced Glutathione, pH =8.0 in the elution buffer.
Handling Advice:	Aliquot to avoid repeated freezing and thawing.
Storage:	-80 °C
Storage Comment:	Best use within three months from the date of receipt of this protein.

Images

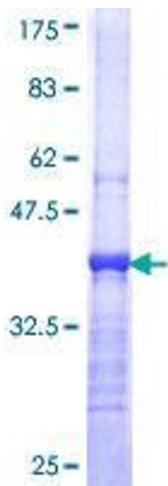


Image 1.