



[Go to Product page](#)

Datasheet for ABIN1347715

C9orf43 Protein (AA 1-461) (GST tag)

1 Image

Overview

Quantity:	10 µg
Target:	C9orf43
Protein Characteristics:	AA 1-461
Origin:	Human
Source:	Wheat germ
Protein Type:	Recombinant
Purification tag / Conjugate:	This C9orf43 protein is labelled with GST tag.
Application:	ELISA, Western Blotting (WB), Antibody Array (AA), Affinity Purification (AP)

Product Details

Purpose:	C9orf43 (Human) Recombinant Protein (P01)
Sequence:	MDLPDESQWD ETTCCGLAVCQ HPQCWATIRR IERGHPRILG SSCKTPLDAE DKLPVLTVVD ILD SGFAAHH LPECTFTKAH SLLSQSSKFY SKFHGRPPKG LPDKSLINCT NRLPKFPVLN LNETQLPCPE DVRNMVVLWI PEETEIHVSQ HGKKKRKNSA VKSKSFLGLS GNQSAGTRVG TPGMIVPPPT PVQLSEQFSS DFLPLWAQSE ALPQDLLKEL LPGGKQTMLC PEMKIKLAMM KKNLPLEKNR PDSVISSKMF LSIHRLTLER PALRYPERLK KLHNLKTEGY RKQQQRQQQQ QQQQKKVKTP IKKQEAKKKA KSDPGIQSTS HKHPVTTVHD RLYGYRTLPG QNSDMKQQQQ MEKGTTSKQD STERPKMNY DHADFHHSVK SPELYETEPT NKDISAPVDA VPEAQAARQK KISFNFSEIM ASTGWNSSELK LLRILQDTDD EDEEDQSSGA E
Characteristics:	Human C9orf43 full-length ORF (NP_689999.1, 1 a.a. - 461 a.a.) recombinant protein with GST-tag at N-terminal.

Product Details

Purification: in vitro wheat germ expression system

Target Details

Target: C9orf43

Alternative Name: C9orf43 ([C9orf43 Products](#))

Background: Full Gene Name: chromosome 9 open reading frame 43
Synonyms: MGC17358

Gene ID: 257169

NCBI Accession: [NM_152786](#)

Application Details

Application Notes: Optimal working dilution should be determined by the investigator.

Comment: Preparation method: in vitro, wheat germ expression system
Product Quality tested by: 12.5% SDS-PAGE Stained with Coomassie Blue.

Restrictions: For Research Use only

Handling

Buffer: 50 mM Tris-HCl, 10 mM reduced Glutathione, pH =8.0 in the elution buffer.

Handling Advice: Aliquot to avoid repeated freezing and thawing.

Storage: -80 °C

Storage Comment: Best use within three months from the date of receipt of this protein.

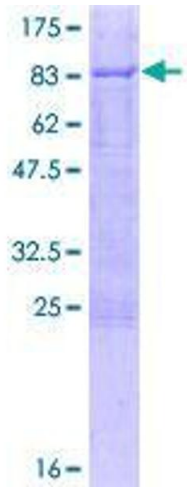


Image 1.