



[Go to Product page](#)

Datasheet for ABIN1347719

C9orf6 Protein (AA 1-181) (GST tag)

1 Image

Overview

Quantity:	10 µg
Target:	C9orf6 (FAM206A)
Protein Characteristics:	AA 1-181
Origin:	Human
Source:	Wheat germ
Protein Type:	Recombinant
Purification tag / Conjugate:	This C9orf6 protein is labelled with GST tag.
Application:	ELISA, Western Blotting (WB), Antibody Array (AA), Affinity Purification (AP)

Product Details

Purpose:	FLJ20457 (Human) Recombinant Protein (P01)
Sequence:	MATEPEAAEP VVPSLVDRYF TRWYKPDVKG KFCEDHCILQ HSNRICVITL AESHPVLQSG KTIKSISYQI STNCSRLQNK VSGKFKRGAQ FLTELAPLCK IYCSDGEEYT VSSCVRGRML EVNENILHKP SILQEKPSTE GYIAVVLPKF EESKSITEGL LTQKQYEEVM VKRINATTAT S
Characteristics:	Human FLJ20457 full-length ORF (AAH15795, 1 a.a. - 181 a.a.) recombinant protein with GST-tag at N-terminal.
Purification:	in vitro wheat germ expression system

Target Details

Target:	C9orf6 (FAM206A)
Alternative Name:	C9orf6 (FAM206A Products)

Target Details

Background: Full Gene Name: chromosome 9 open reading frame 6
Synonyms: CG-8,FLJ20457

Gene ID: 54942

Application Details

Application Notes: Optimal working dilution should be determined by the investigator.

Comment: Preparation method: in vitro, wheat germ expression system
Product Quality tested by: 12.5% SDS-PAGE Stained with Coomassie Blue.

Restrictions: For Research Use only

Handling

Buffer: 50 mM Tris-HCl, 10 mM reduced Glutathione, pH =8.0 in the elution buffer.

Handling Advice: Aliquot to avoid repeated freezing and thawing.

Storage: -80 °C

Storage Comment: Best use within three months from the date of receipt of this protein.

Images

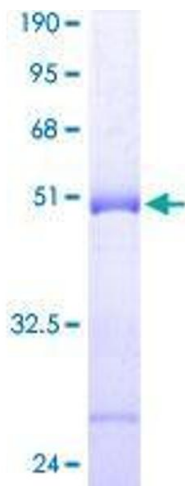


Image 1.