



[Go to Product page](#)

Datasheet for ABIN1347751

## CA10 Protein (AA 229-328) (GST tag)

### 1 Image

#### Overview

Quantity:	10 µg
Target:	CA10
Protein Characteristics:	AA 229-328
Origin:	Human
Source:	Wheat germ
Protein Type:	Recombinant
Purification tag / Conjugate:	This CA10 protein is labelled with GST tag.
Application:	ELISA, Western Blotting (WB), Antibody Array (AA), Affinity Purification (AP)

#### Product Details

Purpose:	CA10 (Human) Recombinant Protein (Q01)
Sequence:	TSSFITYDGS MTIPPCYETA SWIIMNKPVY ITRMQMHSLR LLSQNPQPSQI FLSMSDNFRP VQPLNNRCIR TNINFSLQ GK DCPNNRAQKL QYRVNEWLLK
Characteristics:	Human CA10 partial ORF ( NP_064563.1, 229 a.a. - 328 a.a.) recombinant protein with GST-tag at N-terminal.
Purification:	in vitro wheat germ expression system

#### Target Details

Target:	CA10
Alternative Name:	CA10 ( <a href="#">CA10 Products</a> )

## Target Details

Background:	Full Gene Name: carbonic anhydrase X Synonyms: CA-RPX,CARPX,HUCEP-15
Gene ID:	56934
NCBI Accession:	<a href="#">NM_020178</a>

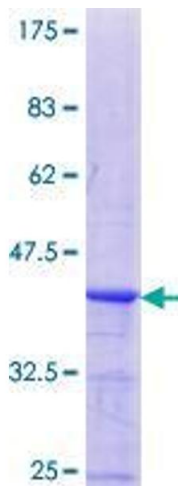
## Application Details

Application Notes:	Optimal working dilution should be determined by the investigator.
Comment:	Preparation method: in vitro, wheat germ expression system Product Quality tested by: 12.5% SDS-PAGE Stained with Coomassie Blue.
Restrictions:	For Research Use only

## Handling

Buffer:	50 mM Tris-HCl, 10 mM reduced Glutathione, pH =8.0 in the elution buffer.
Handling Advice:	Aliquot to avoid repeated freezing and thawing.
Storage:	-80 °C
Storage Comment:	Best use within three months from the date of receipt of this protein.

## Images



**Image 1.**