



[Go to Product page](#)

Datasheet for ABIN1347755
CA11 Protein (AA 1-328) (GST tag)

1 Image

Overview

Quantity:	10 µg
Target:	CA11
Protein Characteristics:	AA 1-328
Origin:	Human
Source:	Wheat germ
Protein Type:	Recombinant
Purification tag / Conjugate:	This CA11 protein is labelled with GST tag.
Application:	ELISA, Western Blotting (WB), Antibody Array (AA), Affinity Purification (AP)

Product Details

Purpose:	CA11 (Human) Recombinant Protein (P01)
Sequence:	MGAAARLSAP RALVLWAALG AAAHIGPAPD PEDWWSYKDN LQGNFVPGPP FWGLVNAAWS LCAVGKRQSP VDVELKRVLY DPFLPPLRLS TGGEKLRGTL YNTGRHVSFL PPRPVVNV GGPLYSHRL SELRLLFGAR DGAGSEHQIN HQGFSAEVQL IHFNQELYGN FSAASRGPNG LAILSLFVNV ASTSNPFLSR LLNRDTITRI SYKNDAYFLQ DLSLELLFPE SFGFITYQGS LSTPPCSETV TWILIDRALN ITSLQMHSR LLSQNPPSQI FQSLSGNSRP LQPLAHRALR GNRDPRHPER RCRGPNYRLH VDGVPHGR
Characteristics:	Human CA11 full-length ORF (AAH02662.1, 1 a.a. - 328 a.a.) recombinant protein with GST-tag at N-terminal.
Purification:	in vitro wheat germ expression system

Target Details

Target:	CA11
Alternative Name:	CA11 (CA11 Products)
Background:	Full Gene Name: carbonic anhydrase XI Synonyms: CARP2,CARPX1
Gene ID:	770

Application Details

Application Notes:	Optimal working dilution should be determined by the investigator.
Comment:	Preparation method: in vitro, wheat germ expression system Product Quality tested by: 12.5% SDS-PAGE Stained with Coomassie Blue.
Restrictions:	For Research Use only

Handling

Buffer:	50 mM Tris-HCl, 10 mM reduced Glutathione, pH =8.0 in the elution buffer.
Handling Advice:	Aliquot to avoid repeated freezing and thawing.
Storage:	-80 °C
Storage Comment:	Best use within three months from the date of receipt of this protein.

Images

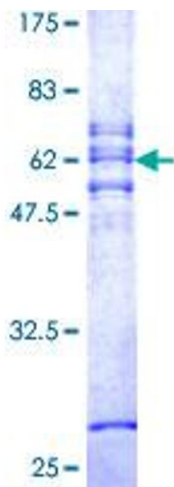


Image 1.