



[Go to Product page](#)

Datasheet for ABIN1347814

## CACFD1 Protein (AA 1-172) (GST tag)

### 1 Image

#### Overview

Quantity:	10 µg
Target:	CACFD1
Protein Characteristics:	AA 1-172
Origin:	Human
Source:	Wheat germ
Protein Type:	Recombinant
Purification tag / Conjugate:	This CACFD1 protein is labelled with GST tag.
Application:	ELISA, Western Blotting (WB), Antibody Array (AA), Affinity Purification (AP)

#### Product Details

Purpose:	CACFD1 (Human) Recombinant Protein (P01)
Sequence:	MSSSGGAPGA SASSAPPAQE EGMTWWYRWL CRLSGVLGAV SCAISGLFNC ITIHPLNIAA GVWMIMNAFI LLLCEAPFCC QFIEFANTVA EKVDRLRSWQ KAVFYCGMAV VPIVISLTLT TLLGNAIAFA TGVLYGLSAL GKKGDAISYA RIQQRQQAD EEKLAETLEG EL
Characteristics:	Human CACFD1 full-length ORF ( NP_060056.1, 1 a.a. - 172 a.a.) recombinant protein with GST-tag at N-terminal.
Purification:	in vitro wheat germ expression system

#### Target Details

Target:	CACFD1
Alternative Name:	CACFD1 ( <a href="#">CACFD1 Products</a> )

## Target Details

Background:	Full Gene Name: calcium channel flower domain containing 1 Synonyms: RP13-100B2.5,C9orf7,D9S2135,FLOWER
Gene ID:	11094
NCBI Accession:	<a href="#">NM_017586</a>

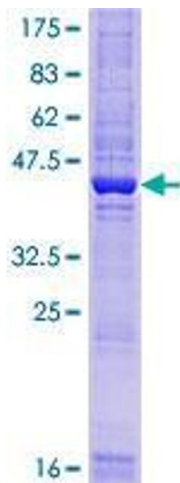
## Application Details

Application Notes:	Optimal working dilution should be determined by the investigator.
Comment:	Preparation method: in vitro, wheat germ expression system Product Quality tested by: 12.5% SDS-PAGE Stained with Coomassie Blue.
Restrictions:	For Research Use only

## Handling

Buffer:	50 mM Tris-HCl, 10 mM reduced Glutathione, pH =8.0 in the elution buffer.
Handling Advice:	Aliquot to avoid repeated freezing and thawing.
Storage:	-80 °C
Storage Comment:	Best use within three months from the date of receipt of this protein.

## Images



**Image 1.**