



Datasheet for ABIN1347824

## CACNA1S Protein (AA 1743-1838) (GST tag)



[Go to Product page](#)

### 1 Image

#### Overview

Quantity:	10 µg
Target:	CACNA1S
Protein Characteristics:	AA 1743-1838
Origin:	Human
Source:	Wheat germ
Protein Type:	Recombinant
Purification tag / Conjugate:	This CACNA1S protein is labelled with GST tag.
Application:	Western Blotting (WB), ELISA, Antibody Array (AA), Affinity Purification (AP)

#### Product Details

Purpose:	CACNA1S (Human) Recombinant Protein (Q01)
Sequence:	CPRVESSMPE DRKSSTPGSL HEETPHSRST RENTSRCSAP ATALLIQKAL VRGGLGTLAA DANFIMATGQ ALGDACQMEP EEVEIMATEL LKGREA
Characteristics:	Human CACNA1S partial ORF ( NP_000060, 1743 a.a. - 1838 a.a.) recombinant protein with GST-tag at N-terminal.
Purification:	in vitro wheat germ expression system

#### Target Details

Target:	CACNA1S
Alternative Name:	CACNA1S ( <a href="#">CACNA1S Products</a> )

## Target Details

Background:	Full Gene Name: calcium channel, voltage-dependent, L type, alpha 1S subunit Synonyms: CACNL1A3,CCHL1A3,Cav1.1,HOKPP,MHS5,hypoPP
Gene ID:	779
NCBI Accession:	<a href="#">NM_000069</a>
Pathways:	<a href="#">Skeletal Muscle Fiber Development</a>

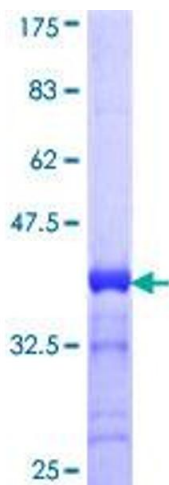
## Application Details

Application Notes:	Optimal working dilution should be determined by the investigator.
Comment:	Preparation method: in vitro, wheat germ expression system Product Quality tested by: 12.5% SDS-PAGE Stained with Coomassie Blue.
Restrictions:	For Research Use only

## Handling

Buffer:	50 mM Tris-HCl, 10 mM reduced Glutathione, pH =8.0 in the elution buffer.
Handling Advice:	Aliquot to avoid repeated freezing and thawing.
Storage:	-80 °C
Storage Comment:	Best use within three months from the date of receipt of this protein.

## Images



**Image 1.**