

Datasheet for ABIN1347826
CACNA2D2 Protein (AA 65-162) (GST tag)



[Go to Product page](#)

1 Image

Overview

Quantity:	10 µg
Target:	CACNA2D2
Protein Characteristics:	AA 65-162
Origin:	Human
Source:	Wheat germ
Protein Type:	Recombinant
Purification tag / Conjugate:	This CACNA2D2 protein is labelled with GST tag.
Application:	ELISA, Western Blotting (WB), Antibody Array (AA), Affinity Purification (AP)

Product Details

Purpose:	CACNA2D2 (Human) Recombinant Protein (Q01)
Sequence:	PQQHTMQHWA RRLEQEV DGV MRIFGGVQQL REIYKDN RNL FEVQENEPQK LVEKVAGDIE SLLDRKVQAL KRLADAAENF QKAHRWQDNI KEEDIVYY
Characteristics:	Human CACNA2D2 partial ORF (NP_006021, 65 a.a. - 162 a.a.) recombinant protein with GST-tag at N-terminal.
Purification:	in vitro wheat germ expression system

Target Details

Target:	CACNA2D2
Alternative Name:	CACNA2D2 (CACNA2D2 Products)

Target Details

Background:	Full Gene Name: calcium channel, voltage-dependent, alpha 2/delta subunit 2 Synonyms: CACNA2D,KIAA0558,LUAC11.1
Gene ID:	9254
NCBI Accession:	NM_006030
Pathways:	Skeletal Muscle Fiber Development

Application Details

Application Notes:	Optimal working dilution should be determined by the investigator.
Comment:	Preparation method: in vitro, wheat germ expression system Product Quality tested by: 12.5% SDS-PAGE Stained with Coomassie Blue.
Restrictions:	For Research Use only

Handling

Buffer:	50 mM Tris-HCl, 10 mM reduced Glutathione, pH =8.0 in the elution buffer.
Handling Advice:	Aliquot to avoid repeated freezing and thawing.
Storage:	-80 °C
Storage Comment:	Best use within three months from the date of receipt of this protein.

Images

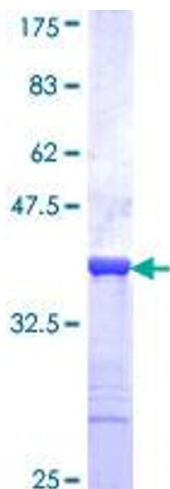


Image 1.