

Datasheet for ABIN1347844
CACNG6 Protein (AA 1-260) (GST tag)



[Go to Product page](#)

1 Image

Overview

Quantity:	25 µg
Target:	CACNG6
Protein Characteristics:	AA 1-260
Origin:	Human
Source:	Wheat germ
Protein Type:	Recombinant
Purification tag / Conjugate:	This CACNG6 protein is labelled with GST tag.
Application:	ELISA, Western Blotting (WB), Antibody Array (AA), Affinity Purification (AP)

Product Details

Purpose:	CACNG6 (Human) Recombinant Protein (P01)
Sequence:	MMWSNFFLQE ENRRRGAAGR RRAHGQGRSG LTPEREGKVK LALLLAAVGA TLAVLSVGTE FWVELNTYKA NGSAVCEAAH LGLWKACTKR LWQADVPVDR DTCGPAELPG EANCTYFKFF TTGENARIFQ RTTKKEVNLA AAVIAVLGLA VMALGCLCII MVLSKGAEFL LRVGAVCFGL SGLLLLVSLE VFRHSVRALL QRVSPEPPPA PRLTYEYSWS LGCGVGAGLI LLLGAGCFLL LTLPSWPWGS LCPKRGRHAT
Characteristics:	Human CACNG6 full-length ORF (NP_665813.1, 1 a.a. - 260 a.a.) recombinant protein with GST-tag at N-terminal.
Purification:	in vitro wheat germ expression system

Target Details

Target:	CACNG6
Alternative Name:	CACNG6 (CACNG6 Products)
Background:	Full Gene Name: calcium channel, voltage-dependent, gamma subunit 6 Synonyms:
Gene ID:	59285
NCBI Accession:	NM_145814

Application Details

Application Notes:	Optimal working dilution should be determined by the investigator.
Comment:	Preparation method: in vitro, wheat germ expression system Product Quality tested by: 12.5% SDS-PAGE Stained with Coomassie Blue.
Restrictions:	For Research Use only

Handling

Buffer:	50 mM Tris-HCl, 10 mM reduced Glutathione, pH =8.0 in the elution buffer.
Handling Advice:	Aliquot to avoid repeated freezing and thawing.
Storage:	-80 °C
Storage Comment:	Best use within three months from the date of receipt of this protein.

Images

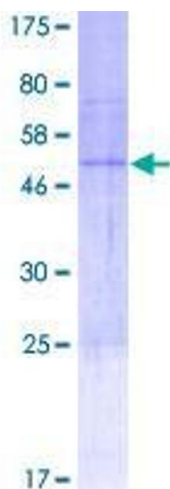


Image 1.