



[Go to Product page](#)

Datasheet for ABIN1347855
CADPS Protein (AA 1256-1353) (GST tag)

1 Image

Overview

Quantity:	10 µg
Target:	CADPS
Protein Characteristics:	AA 1256-1353
Origin:	Human
Source:	Wheat germ
Protein Type:	Recombinant
Purification tag / Conjugate:	This CADPS protein is labelled with GST tag.
Application:	Western Blotting (WB), ELISA, Antibody Array (AA), Affinity Purification (AP)

Product Details

Purpose:	CADPS (Human) Recombinant Protein (Q01)
Sequence:	RLFDQWYNSS MNVICTWLTD RMDLQLHIYQ LKTLIRMVKK TYRDFRLQGV LDSTLNSKTY ETIRNRLTVE EATASVSEGG GLQGISMKDS DEEDEEDD
Characteristics:	Human CADPS partial ORF (NP_003707, 1256 a.a. - 1353 a.a.) recombinant protein with GST-tag at N-terminal.
Purification:	in vitro wheat germ expression system

Target Details

Target:	CADPS
Alternative Name:	CADPS (CADPS Products)

Target Details

Background: Full Gene Name: Ca⁺⁺-dependent secretion activator
Synonyms: CADPS1,CAPS,CAPS1,KIAA1121

Gene ID: 8618

NCBI Accession: [NM_003716](#)

Pathways: [Synaptic Vesicle Exocytosis](#)

Application Details

Application Notes: Optimal working dilution should be determined by the investigator.

Comment: Preparation method: in vitro, wheat germ expression system
Product Quality tested by: 12.5% SDS-PAGE Stained with Coomassie Blue.

Restrictions: For Research Use only

Handling

Buffer: 50 mM Tris-HCl, 10 mM reduced Glutathione, pH =8.0 in the elution buffer.

Handling Advice: Aliquot to avoid repeated freezing and thawing.

Storage: -80 °C

Storage Comment: Best use within three months from the date of receipt of this protein.

Images

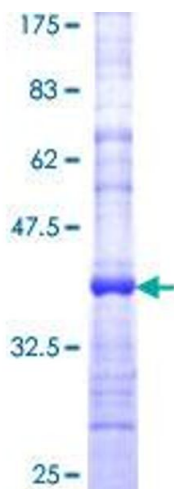


Image 1.