



[Go to Product page](#)

Datasheet for ABIN1347911

## CALU Protein (AA 1-315) (GST tag)

### 1 Image

#### Overview

Quantity:	10 µg
Target:	CALU
Protein Characteristics:	AA 1-315
Origin:	Human
Source:	Wheat germ
Protein Type:	Recombinant
Purification tag / Conjugate:	This CALU protein is labelled with GST tag.
Application:	Western Blotting (WB), ELISA, Antibody Array (AA), Affinity Purification (AP)

#### Product Details

Purpose:	CALU (Human) Recombinant Protein (P01)
Sequence:	MDLRQFLMCL SLCTAFALSK PTEKKDRVHH EPQLSDKVHN DAQSFYDHD AFLGAEAAKT FDQLTPEESK ERLGKIVSKI DGDKDGFVTV DELKDWIKFA QKRWIYEDVE RQWKGHDLINE DGLVSWEEYK NATYGYVLDD PDPDDGFNYK QMMVRDERRF KMADKGDGLI ATKEEFTAFL HPEEYDYMKD IVVQETMEDI DKNADGFIDL EYIGDMYSH DGNTDEPEWV KTEREQFVEF RDKNRDGKMD KEETKDWILP SDYDHAEAEA RHLVYESDQN KDGKLTKEEI VDKYDLFVGS QATDFGEALV RHDEF
Characteristics:	Human CALU full-length ORF ( NP_001210.1, 1 a.a. - 315 a.a.) recombinant protein with GST-tag at N-terminal.
Purification:	in vitro wheat germ expression system

## Target Details

Target:	CALU
Alternative Name:	CALU ( <a href="#">CALU Products</a> )
Background:	Full Gene Name: calumenin Synonyms: FLJ90608
Gene ID:	813
NCBI Accession:	<a href="#">NM_001219</a>

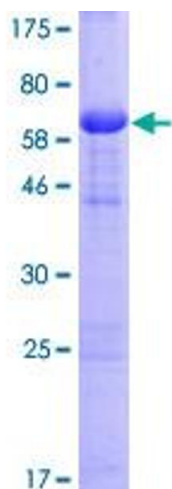
## Application Details

Application Notes:	Optimal working dilution should be determined by the investigator.
Comment:	Preparation method: in vitro, wheat germ expression system Product Quality tested by: 12.5% SDS-PAGE Stained with Coomassie Blue.
Restrictions:	For Research Use only

## Handling

Buffer:	50 mM Tris-HCl, 10 mM reduced Glutathione, pH =8.0 in the elution buffer.
Handling Advice:	Aliquot to avoid repeated freezing and thawing.
Storage:	-80 °C
Storage Comment:	Best use within three months from the date of receipt of this protein.

## Images



**Image 1.**