

Datasheet for ABIN1347929

## CAMK2B Protein (AA 1-503) (GST tag)



[Go to Product page](#)

### 2 Images

#### Overview

Quantity:	10 µg
Target:	CAMK2B
Protein Characteristics:	AA 1-503
Origin:	Human
Source:	Wheat germ
Protein Type:	Recombinant
Purification tag / Conjugate:	This CAMK2B protein is labelled with GST tag.
Application:	Western Blotting (WB), ELISA, Antibody Array (AA), Affinity Purification (AP), Kinase Activity Assay (KAA)

#### Product Details

Purpose:	CAMK2B (Human) Recombinant Protein (P01)
Sequence:	MATTVTCTRF TDEYQLYEDI GKGAFSVVRR CVKLCTGHEY AAKIINTKKL SARDHQKLER EARICRLKHH SNIVRLHDSI SEEGFHLYLVF DLVTGGELFE DIVAREYYSE ADASHCIQQI LEAVLHCHQM GVVHRDLKPE NLLASKCKG AAVKLADFGL AIEVQGDQQA WFGFAGTPGY LSPEVLRKEA YGKPVDIWAC GVILYILLVG YPPFWDEDQH KLYQQIKAGA YDFPSPEWDT VTPEAKNLIN QMLTINPAKR ITAHEALKHP WVCQRSTVAS MMHRQETVEC LKKFNARRKL KGAILTTMLA TRNFSAKSL LNKKADGVKP QTNSTKNSAA ATSPKGLTLP AALESSDSAN TTIEDEDAKA RKQEIIKTTE QLIEAVNNGD FEAYAKICDP GLTSFEPEAL GNLVEGMDFH RFYFENLLAK NSKPIHTTIL NPHVHIGED AACIAYIRLT QYIDGQGRPR TSQSEETRVW HRRDGKWQNV HFHCSGAPVA PLQ
Characteristics:	Human CAMK2B full-length ORF ( AAH19070.1, 1 a.a. - 503 a.a.) recombinant protein with GST-

## Product Details

---

tag at N-terminal.

Purification: in vitro wheat germ expression system

## Target Details

---

Target: CAMK2B

Alternative Name: CAMK2B ([CAMK2B Products](#))

Background: Full Gene Name: calcium/calmodulin-dependent protein kinase II beta  
Synonyms: CAM2,CAMK2,CAMKB,MGC29528

Gene ID: 816

Pathways: [WNT Signaling](#), [Interferon-gamma Pathway](#), [Myometrial Relaxation and Contraction](#), [Regulation of G-Protein Coupled Receptor Protein Signaling](#), [Smooth Muscle Cell Migration](#), [Regulation of long-term Neuronal Synaptic Plasticity](#)

## Application Details

---

Application Notes: Optimal working dilution should be determined by the investigator.

Comment: Preparation method: in vitro, wheat germ expression system  
Product Quality tested by: 12.5% SDS-PAGE Stained with Coomassie Blue.

Restrictions: For Research Use only

## Handling

---

Buffer: 50 mM Tris-HCl, 10 mM reduced Glutathione, pH =8.0 in the elution buffer.

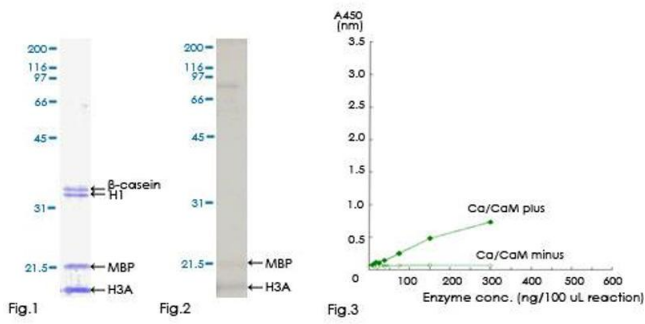
Handling Advice: Aliquot to avoid repeated freezing and thawing.

Storage: -80 °C

Storage Comment: Best use within three months from the date of receipt of this protein.

**Kinase Activity Assay**

**Image 1.**



**Image 2.**

