

Datasheet for ABIN1347976

CAPNL1 Protein (AA 610-714) (GST tag)



[Go to Product page](#)

1 Image

Overview

Quantity:	10 µg
Target:	CAPNL1
Protein Characteristics:	AA 610-714
Origin:	Human
Source:	Wheat germ
Protein Type:	Recombinant
Purification tag / Conjugate:	This CAPNL1 protein is labelled with GST tag.
Application:	ELISA, Western Blotting (WB), Antibody Array (AA), Affinity Purification (AP)

Product Details

Purpose:	CAPN1 (Human) Recombinant Protein (Q01)
Sequence:	FNILWNRIRN YLSIFRKFDL DKSGSMSAYE MRMAIESAGF KLNKKLYELI ITRYSEPDLA VDFDNFVCCL VRLETMFRFF KTLDTDLDGV VTFDLFKWLQ LTMFA
Characteristics:	Human CAPN1 partial ORF (AAH08751, 610 a.a. - 714 a.a.) recombinant protein with GST-tag at N-terminal.
Purification:	in vitro wheat germ expression system

Target Details

Target:	CAPNL1
Alternative Name:	CAPN1 (CAPNL1 Products)

Target Details

Background:	Full Gene Name: calpain 1, (mu/I) large subunit Synonyms: CANP,CANP1,CANPL1,muCANP,muCL
Gene ID:	823
Pathways:	Apoptosis

Application Details

Application Notes:	Optimal working dilution should be determined by the investigator.
Comment:	Preparation method: in vitro, wheat germ expression system Product Quality tested by: 12.5% SDS-PAGE Stained with Coomassie Blue.
Restrictions:	For Research Use only

Handling

Buffer:	50 mM Tris-HCl, 10 mM reduced Glutathione, pH =8.0 in the elution buffer.
Handling Advice:	Aliquot to avoid repeated freezing and thawing.
Storage:	-80 °C
Storage Comment:	Best use within three months from the date of receipt of this protein.

Images

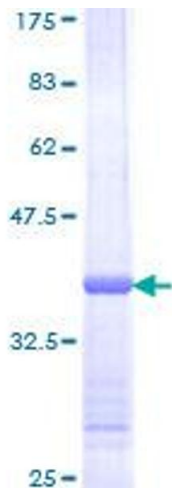


Image 1.