

Datasheet for ABIN1348004

## Calpain S1 Protein (AA 172-260) (GST tag)



[Go to Product page](#)

### 1 Image

#### Overview

Quantity:	10 µg
Target:	Calpain S1 (CAPNS1)
Protein Characteristics:	AA 172-260
Origin:	Human
Source:	Wheat germ
Protein Type:	Recombinant
Purification tag / Conjugate:	This Calpain S1 protein is labelled with GST tag.
Application:	Western Blotting (WB), ELISA, Antibody Array (AA), Affinity Purification (AP)

#### Product Details

Purpose:	CAPNS1 (Human) Recombinant Protein (Q01)
Sequence:	KRWQAIYKQF DTDRSGTICS SELPGAFAEA GFHLNEHLYN MIIRRYSDS GNMDFDNFIS CLVRLDAMFR AFKSLDKDGT GQIQVNIQE
Characteristics:	Human CAPNS1 partial ORF ( AAH00592, 172 a.a. - 260 a.a.) recombinant protein with GST-tag at N-terminal.
Purification:	in vitro wheat germ expression system

#### Target Details

Target:	Calpain S1 (CAPNS1)
Alternative Name:	CAPNS1 ( <a href="#">CAPNS1 Products</a> )

## Target Details

Background:	Full Gene Name: calpain, small subunit 1 Synonyms: 30K,CALPAIN4,CANP,CANPS,CAPN4,CDPS
Gene ID:	826
Pathways:	<a href="#">Apoptosis</a>

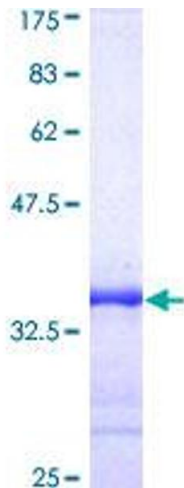
## Application Details

Application Notes:	Optimal working dilution should be determined by the investigator.
Comment:	Preparation method: in vitro, wheat germ expression system Product Quality tested by: 12.5% SDS-PAGE Stained with Coomassie Blue.
Restrictions:	For Research Use only

## Handling

Buffer:	50 mM Tris-HCl, 10 mM reduced Glutathione, pH =8.0 in the elution buffer.
Handling Advice:	Aliquot to avoid repeated freezing and thawing.
Storage:	-80 °C
Storage Comment:	Best use within three months from the date of receipt of this protein.

## Images



**Image 1.**