

Datasheet for ABIN1348008

CAPRIN2 Protein (AA 1-158) (GST tag)[Go to Product page](#)

1 Image

Overview

Quantity:	10 µg
Target:	CAPRIN2
Protein Characteristics:	AA 1-158
Origin:	Human
Source:	Wheat germ
Protein Type:	Recombinant
Purification tag / Conjugate:	This CAPRIN2 protein is labelled with GST tag.
Application:	ELISA, Western Blotting (WB), Antibody Array (AA), Affinity Purification (AP)

Product Details

Purpose:	C1QDC1 (Human) Recombinant Protein (P01)
Sequence:	MTPVDVPVTN PAATILPVHV YPLPQQMRVA FSAARTSNLA PGTLDQPIVF DLLLNNLGET FDLQLGRFNC PVNGTYVFIF HMLKLAVNVP LYVNLMKNEE VLV SAYANDG APDHETASNH AILQLFQGDQ IWLRLHRGAI YGSSWKYSTF SGYLLYQD
Characteristics:	Human C1QDC1 full-length ORF (AAH07520.1, 1 a.a. - 158 a.a.) recombinant protein with GST-tag at N-terminal.
Purification:	in vitro wheat germ expression system

Target Details

Target:	CAPRIN2
Alternative Name:	CAPRIN2 (CAPRIN2 Products)

Target Details

Background: Gene: caprin family member 2
Synonyms: C1QDC1, EEG-1, EEG1, FLJ11391, FLJ22569, KIAA1873, MGC102894, MGC134847, MGC134848, caprin-2

Gene ID: 65981

Application Details

Application Notes: Optimal working dilution should be determined by the investigator.

Restrictions: For Research Use only

Handling

Buffer: 50 mM Tris-HCl, 10 mM reduced Glutathione, pH =8.0 in the elution buffer.

Handling Advice: Aliquot to avoid repeated freezing and thawing.

Storage: -80 °C

Storage Comment: Best use within three months from the date of receipt of this protein.

Images

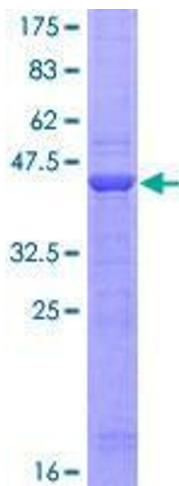


Image 1.