



[Go to Product page](#)

Datasheet for ABIN1348018

CAPSL Protein (AA 1-198) (GST tag)

1 Image

Overview

Quantity:	10 µg
Target:	CAPSL
Protein Characteristics:	AA 1-198
Origin:	Human
Source:	Wheat germ
Protein Type:	Recombinant
Purification tag / Conjugate:	This CAPSL protein is labelled with GST tag.
Application:	ELISA, Western Blotting (WB), Antibody Array (AA), Affinity Purification (AP)

Product Details

Purpose:	CAPSL (Human) Recombinant Protein (P01)
Sequence:	MAIQAKKKLT TATNPIERLR LQCLARGSAG IKGLGRVFRI MDDNNRTLD FKEFMKGLND YAVVMEKEEV EELFRRFDKD GNGTIDFNEF LLTLRPPMSR ARKEVIMQAF RKLDKTGDGV ITIEDLREVY NAKHHPKYQN GEWSEEQVFR KFLDNFDSPY DKDGLVTPEE FMNYYAGVSA SIDTDVYFII MMRTAWKL
Characteristics:	Human CAPSL full-length ORF (AAH17586.2, 1 a.a. - 198 a.a.) recombinant protein with GST-tag at N-terminal.
Purification:	in vitro wheat germ expression system

Target Details

Target:	CAPSL
---------	-------

Target Details

Alternative Name:	CAPSL (CAPSL Products)
Background:	Full Gene Name: calcyphosine-like Synonyms: MGC26610
Gene ID:	133690

Application Details

Application Notes:	Optimal working dilution should be determined by the investigator.
Comment:	Preparation method: in vitro, wheat germ expression system Product Quality tested by: 12.5% SDS-PAGE Stained with Coomassie Blue.
Restrictions:	For Research Use only

Handling

Buffer:	50 mM Tris-HCl, 10 mM reduced Glutathione, pH =8.0 in the elution buffer.
Handling Advice:	Aliquot to avoid repeated freezing and thawing.
Storage:	-80 °C
Storage Comment:	Best use within three months from the date of receipt of this protein.

Images

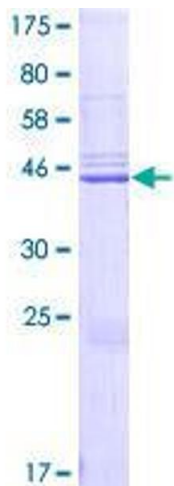


Image 1.