



[Go to Product page](#)

Datasheet for ABIN1348055

CARD6 Protein (AA 1-110) (GST tag)

1 Image

Overview

Quantity:	10 µg
Target:	CARD6
Protein Characteristics:	AA 1-110
Origin:	Human
Source:	Wheat germ
Protein Type:	Recombinant
Purification tag / Conjugate:	This CARD6 protein is labelled with GST tag.
Application:	ELISA, Western Blotting (WB), Antibody Array (AA), Affinity Purification (AP)

Product Details

Purpose:	CARD6 (Human) Recombinant Protein (Q01)
Sequence:	MATESTPSEI IERERKLLLE ILQHDPDSIL DTLTSRRLIS EEEYETLENV TDLLKKSRLK LILVQKKGEA TCQHFLKCLF STFPQSAIC GLRHEVLKHE NTVPPQSMGA
Characteristics:	Human CARD6 partial ORF (NP_115976, 1 a.a. - 110 a.a.) recombinant protein with GST-tag at N-terminal.
Purification:	in vitro wheat germ expression system

Target Details

Target:	CARD6
Alternative Name:	CARD6 (CARD6 Products)

Target Details

Background:	Full Gene Name: caspase recruitment domain family, member 6 Synonyms: CINCIN1
Gene ID:	84674
NCBI Accession:	NM_032587

Application Details

Application Notes:	Optimal working dilution should be determined by the investigator.
Comment:	Preparation method: in vitro, wheat germ expression system Product Quality tested by: 12.5% SDS-PAGE Stained with Coomassie Blue.
Restrictions:	For Research Use only

Handling

Buffer:	50 mM Tris-HCl, 10 mM reduced Glutathione, pH =8.0 in the elution buffer.
Handling Advice:	Aliquot to avoid repeated freezing and thawing.
Storage:	-80 °C
Storage Comment:	Best use within three months from the date of receipt of this protein.

Images

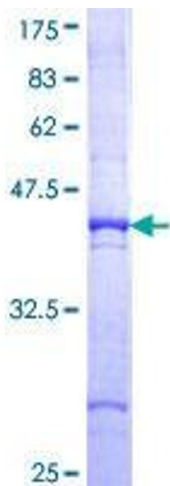


Image 1.