



[Go to Product page](#)

Datasheet for ABIN1348116

## Caspase 9 Protein (AA 1-416) (GST tag)

### 1 Image

#### Overview

|                               |   |
|-------------------------------|---|
| Quantity:                     | 10 µg   |
| Target:                       | Caspase 9 (CASP9)   |
| Protein Characteristics:      | AA 1-416  |
| Origin:                       | Human   |
| Source:                       | Wheat germ  |
| Protein Type:                 | Recombinant   |
| Purification tag / Conjugate: | This Caspase 9 protein is labelled with GST tag.                              |
| Application:                  | Western Blotting (WB), ELISA, Antibody Array (AA), Affinity Purification (AP) |

#### Product Details

|                  |  |
|------------------|--|
| Purpose:         | CASP9 (Human) Recombinant Protein (P01)  |
| Sequence:        | MDEADRRLLR RCRLRLVEEL QVDQLWDALL SRELFRRPHMI EDIQRAGSGS RRDQARQLII<br>DLETRGSQAL PLFISCLEDT GQDMLASFLR TNRQAAKLSK PTLENLTPVV LRPEIRKPEV<br>LRPETPRPVD IGSGGFGDVG ALESLRGNAD LAYILSMEPC GHCLIINNVN FCRESGLRTR<br>TGSNIDCEKL RRRFSSLHFM VEVKGDLTAK KMVLALLELA QQDHGALDCC VVILSHGCO<br>ASHLQFPGAV YGTDGCPVSV EKIVNIFNGT SCPSLGGKPK LFFIQACGGE QKDHGFEVAS<br>TSPEDESPGS NPEPDATPFQ EGLRTFDQLD AISSLTPSD IFVSYSTFPG FVSWRDPKSG<br>SWYVETLDDI FEQWAHSEDL QSLLLRVANA VSVKGIYKQM PGCNFNLRKK LFFKTS |
| Characteristics: | Human CASP9 full-length ORF ( AAH02452.1, 1 a.a. - 416 a.a.) recombinant protein with GST-tag at N-terminal.   |
| Purification:    | in vitro wheat germ expression system  |

## Target Details

---

|                   |   |
|-------------------|---|
| Target:           | Caspase 9 (CASP9)   |
| Alternative Name: | CASP9 ( <a href="#">CASP9 Products</a> )  |
| Background:       | Full Gene Name: caspase 9, apoptosis-related cysteine peptidase<br>Synonyms: APAF-3, APAF3, CASPASE-9c, ICE-LAP6, MCH6  |
| Gene ID:          | 842   |
| Pathways:         | <a href="#">MAPK Signaling</a> , <a href="#">RTK Signaling</a> , <a href="#">Apoptosis</a> , <a href="#">Caspase Cascade in Apoptosis</a> , <a href="#">Fc-epsilon Receptor Signaling Pathway</a> , <a href="#">EGFR Signaling Pathway</a> , <a href="#">Neurotrophin Signaling Pathway</a> , <a href="#">Positive Regulation of Endopeptidase Activity</a> |

## Application Details

---

|                    |  |
|--------------------|--|
| Application Notes: | Optimal working dilution should be determined by the investigator.   |
| Comment:           | Preparation method: in vitro, wheat germ expression system<br>Product Quality tested by: 12.5% SDS-PAGE Stained with Coomassie Blue. |
| Restrictions:      | For Research Use only  |

## Handling

---

|                  |   |
|------------------|---|
| Buffer:          | 50 mM Tris-HCl, 10 mM reduced Glutathione, pH =8.0 in the elution buffer. |
| Handling Advice: | Aliquot to avoid repeated freezing and thawing.                           |
| Storage:         | -80 °C  |
| Storage Comment: | Best use within three months from the date of receipt of this protein.    |

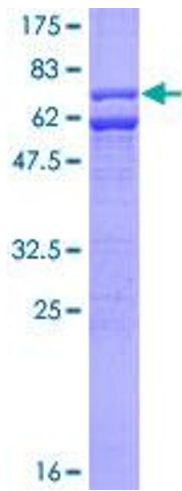


Image 1.