

Datasheet for ABIN1348137

Catalase Protein (CAT) (AA 1-527) (GST tag)



[Go to Product page](#)

1 Image

Overview

Quantity:	10 µg
Target:	Catalase (CAT)
Protein Characteristics:	AA 1-527
Origin:	Human
Source:	Wheat germ
Protein Type:	Recombinant
Purification tag / Conjugate:	This Catalase protein is labelled with GST tag.
Application:	Western Blotting (WB), ELISA, Antibody Array (AA), Affinity Purification (AP)

Product Details

Purpose:	CAT (Human) Recombinant Protein (P01)
Sequence:	MADSRDPASD QMQHWKEQRA AQKADVLTTG AGNPVGDKLN VITVGPRGPL LVQDVVFTDE MAHFDREERIP ERVVHAKGAG AFGYFEVTHD ITKYSKAKVF EHIGKKTPIA VRFSTVAGES GSADTVRDPR GFAVKFYTED GNWDLVGNNT PIFFIRDPII FPSFIHSQKR NPQTHLKDPD MWWDFWSLRP ESLHQVSFLF SDRGIPDGHR HMNGYGSHTF KLVNANGEAV YCKFHFKTDQ GIKNLSVEDA ARLSQEDPDY GIRDLFNAIA TGKYPSTWTFY IQVMTFNQAE TFPFNPFDLT KVWPHKDYPL IPVGKLVNLR NPVNYFAEVE QIAFDPSNMP PGIEASPKM LQGRLFAYPD THRHRLGPNY LHIPVNCYPYR ARVANYQRDG PMCMQDNQGG APNYYPNSFG APEQQPSALE HSIQYSGEVR RFNTANDDNV TQVRAFVNV LNEEQRKRLC ENIAGHLKDA QIFIQKKAVK NFTEVHPDYG SHIQALLDKY NAEKPKNAIH TQVQSGSHLA AREKANL
Characteristics:	Human CAT full-length ORF (NP_001743.1, 1 a.a. - 527 a.a.) recombinant protein with GST-tag at N-terminal.

Product Details

Purification: in vitro wheat germ expression system

Target Details

Target: Catalase (CAT)

Alternative Name: CAT ([CAT Products](#))

Background: Full Gene Name: catalase
Synonyms: MGC138422,MGC138424

Gene ID: 847

NCBI Accession: [NM_001752](#)

Pathways: [Cellular Glucan Metabolic Process](#), [Cell RedoxHomeostasis](#), [Photoperiodism](#)

Application Details

Application Notes: Optimal working dilution should be determined by the investigator.

Comment: Preparation method: in vitro, wheat germ expression system
Product Quality tested by: 12.5% SDS-PAGE Stained with Coomassie Blue.

Restrictions: For Research Use only

Handling

Buffer: 50 mM Tris-HCl, 10 mM reduced Glutathione, pH =8.0 in the elution buffer.

Handling Advice: Aliquot to avoid repeated freezing and thawing.

Storage: -80 °C

Storage Comment: Best use within three months from the date of receipt of this protein.

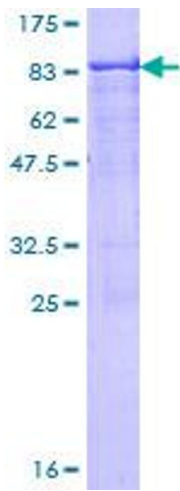


Image 1.