

Datasheet for ABIN1348157
CBFA2T2 Protein (AA 1-614) (GST tag)



[Go to Product page](#)

1 Image

Overview

Quantity:	25 µg
Target:	CBFA2T2
Protein Characteristics:	AA 1-614
Origin:	Human
Source:	Wheat germ
Protein Type:	Recombinant
Purification tag / Conjugate:	This CBFA2T2 protein is labelled with GST tag.
Application:	ELISA, Western Blotting (WB), Antibody Array (AA), Affinity Purification (AP)

Product Details

Purpose:	CBFA2T2 (Human) Recombinant Protein (P01)
Sequence:	MGFHHVGQAR LELLTSGDLP ALASQRAGIT VGPEKRV PAM PGSPVEVKIQ SRSSPPTMPP LPPINPGGPR PVSFTPTALS NGINHSPPTL NGAPSPQRF SNGPASSTSS ALTNQQLPAT CGARQLSKLK RFLTTLQQFG NDISPEIGEK VRTLVLALVN STVTIEEFHC KLQEATNFPL RPFVIPFLKA NLPLLQRELL HCARA AKQTP SQYLAQHEHL LLNTSIASPA DSELLMEVH GNGKRSPER REENSFDRDT IAPEPPAKRV CTISPAPRHS PALTVPLMNP GGQFHPTPPP LQHYTLEDIA TSHLYREP NK MLEHREVRDR HHSLGLNGGY QDELVDHRLT EREWADEWKH LDHALNCIME MVEKTRRSMA VLRR CQGS DR EELNYWKRRY NENTELRKTG TELVSRQHSP GSADSLNDS QREFNSRPGT GYVPVEFWKK TEEAVNKVKI QAMSEVQKAV AEAEQKAFEV IATERARMEQ TIADV KRQAA EDAFLVINEQ EESTENCWNC GRKASETCSG CNIARYCGSF CQHKDWERHH RLCGQNLHGQ SPHGQGRPLL PVGRGSSARS ADCSVSPAL DKTSATTSRS STPASVTAID TNGL

Product Details

Characteristics:	Human CBFA2T2 full-length ORF (AAH40344, 1 a.a. - 614 a.a.) recombinant protein with GST-tag at N-terminal.
Purification:	in vitro wheat germ expression system

Target Details

Target:	CBFA2T2
Alternative Name:	CBFA2T2 (CBFA2T2 Products)
Background:	Full Gene Name: core-binding factor, runt domain, alpha subunit 2, translocated to, 2 Synonyms: DKFZp313F2116,EHT,MTGR1,ZMYND3
Gene ID:	9139

Application Details

Application Notes:	Optimal working dilution should be determined by the investigator.
Comment:	Preparation method: in vitro, wheat germ expression system Product Quality tested by: 12.5% SDS-PAGE Stained with Coomassie Blue.
Restrictions:	For Research Use only

Handling

Buffer:	50 mM Tris-HCl, 10 mM reduced Glutathione, pH =8.0 in the elution buffer.
Handling Advice:	Aliquot to avoid repeated freezing and thawing.
Storage:	-80 °C
Storage Comment:	Best use within three months from the date of receipt of this protein.

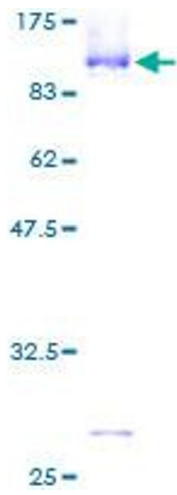


Image 1.