



[Go to Product page](#)

Datasheet for ABIN1348164  
**CBFB Protein (AA 1-182) (GST tag)**

1 Image

Overview

Quantity:	10 µg
Target:	CBFB
Protein Characteristics:	AA 1-182
Origin:	Human
Source:	Wheat germ
Protein Type:	Recombinant
Purification tag / Conjugate:	This CBFB protein is labelled with GST tag.
Application:	Western Blotting (WB), ELISA, Antibody Array (AA), Affinity Purification (AP)

Product Details

Purpose:	CBFB (Human) Recombinant Protein (P01)
Sequence:	MPRVVPDQRS KFENEEFFRK LSRECEIKYT GFGDRPHEER QARLQNACRD GRSEIAFVAT GTNLSLQFFP ASWQGEQRQT PSREYVDLER EAGKVYLKAP MILNGVCVIW KGWIDLQRLD GMGCLEFDEE RAQQEDALAQ QAFEEARRRT REFEDRDRSH REEMEVRSQ LLAVTGKKTTP
Characteristics:	Human CBFB full-length ORF ( AAH18509, 1 a.a. - 182 a.a.) recombinant protein with GST-tag at N-terminal.
Purification:	in vitro wheat germ expression system

Target Details

Target:	CBFB
Alternative Name:	CBFB ( <a href="#">CBFB Products</a> )

## Target Details

Background:	Full Gene Name: core-binding factor, beta subunit Synonyms: PEBP2B
Gene ID:	865
Pathways:	<a href="#">Regulation of Lipid Metabolism by PPARalpha</a>

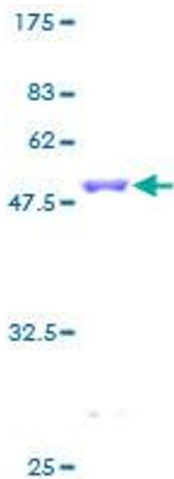
## Application Details

Application Notes:	Optimal working dilution should be determined by the investigator.
Comment:	Preparation method: in vitro, wheat germ expression system Product Quality tested by: 12.5% SDS-PAGE Stained with Coomassie Blue.
Restrictions:	For Research Use only

## Handling

Buffer:	50 mM Tris-HCl, 10 mM reduced Glutathione, pH =8.0 in the elution buffer.
Handling Advice:	Aliquot to avoid repeated freezing and thawing.
Storage:	-80 °C
Storage Comment:	Best use within three months from the date of receipt of this protein.

## Images



**Image 1.**