



[Go to Product page](#)

Datasheet for ABIN1348170

CBL Protein (AA 736-835) (GST tag)

1 Image

Overview

Quantity:	10 µg
Target:	CBL
Protein Characteristics:	AA 736-835
Origin:	Human
Source:	Wheat germ
Protein Type:	Recombinant
Purification tag / Conjugate:	This CBL protein is labelled with GST tag.
Application:	Western Blotting (WB), ELISA, Antibody Array (AA), Affinity Purification (AP)

Product Details

Purpose:	CBL (Human) Recombinant Protein (Q01)
Sequence:	NIQSQAPSIT ESSTFGEGNL AAAHANTGPE ESENEDDGYD VPKPPVPAVL ARRTLSDISN ASSSFGWLSL DGDPTTNVTE GSQVPERPPK PFPRRINSER
Characteristics:	Human CBL partial ORF (NP_005179, 736 a.a. - 835 a.a.) recombinant protein with GST-tag at N-terminal.
Purification:	in vitro wheat germ expression system

Target Details

Target:	CBL
Alternative Name:	CBL (CBL Products)

Target Details

Background:	Full Gene Name: Cas-Br-M (murine) ecotropic retroviral transforming sequence Synonyms: C-CBL,CBL2,RNF55
Gene ID:	867
NCBI Accession:	NM_005188
Pathways:	TCR Signaling , Interferon-gamma Pathway , EGFR Signaling Pathway , EGFR Downregulation , VEGFR1 Specific Signals

Application Details

Application Notes:	Optimal working dilution should be determined by the investigator.
Comment:	Preparation method: in vitro, wheat germ expression system Product Quality tested by: 12.5% SDS-PAGE Stained with Coomassie Blue.
Restrictions:	For Research Use only

Handling

Buffer:	50 mM Tris-HCl, 10 mM reduced Glutathione, pH =8.0 in the elution buffer.
Handling Advice:	Aliquot to avoid repeated freezing and thawing.
Storage:	-80 °C
Storage Comment:	Best use within three months from the date of receipt of this protein.

Images

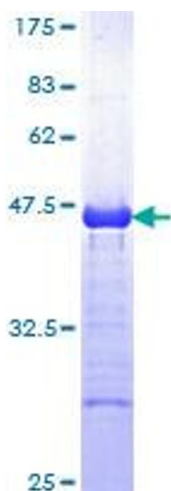


Image 1.