



[Go to Product page](#)

Datasheet for ABIN1348188

CBR3 Protein (AA 180-277) (GST tag)

1 Image

1 Publication

Overview

Quantity:	10 µg
Target:	CBR3
Protein Characteristics:	AA 180-277
Origin:	Human
Source:	Wheat germ
Protein Type:	Recombinant
Purification tag / Conjugate:	This CBR3 protein is labelled with GST tag.
Application:	Western Blotting (WB), ELISA, Antibody Array (AA), Affinity Purification (AP)

Product Details

Purpose:	CBR3 (Human) Recombinant Protein (Q01)
Sequence:	KNEVHEREGW PNSPYGVSKL GVTVLSRILA RRLDEKRRKAD RILVNACCPG PVKTDMDGKD SIRTVEEGAE TPVYLALLPP DATEPQGQLV HDKVVQNW
Characteristics:	Human CBR3 partial ORF (NP_001227, 180 a.a. - 277 a.a.) recombinant protein with GST-tag at N-terminal.
Purification:	in vitro wheat germ expression system

Target Details

Target:	CBR3
Alternative Name:	CBR3 (CBR3 Products)

Target Details

Background: Full Gene Name: carbonyl reductase 3
Synonyms: SDR21C2,hCBR3

Gene ID: 874

NCBI Accession: [NM_001236](#)

Application Details

Application Notes: Optimal working dilution should be determined by the investigator.

Comment: Preparation method: in vitro, wheat germ expression system
Product Quality tested by: 12.5% SDS-PAGE Stained with Coomassie Blue.

Restrictions: For Research Use only

Handling

Buffer: 50 mM Tris-HCl, 10 mM reduced Glutathione, pH =8.0 in the elution buffer.

Handling Advice: Aliquot to avoid repeated freezing and thawing.

Storage: -80 °C

Storage Comment: Best use within three months from the date of receipt of this protein.

Publications

Product cited in: Bains, Karkling, Lubieniecka, Grigliatti, Reid, Riggs: "Naturally occurring variants of human CBR3 alter anthracycline in vitro metabolism." in: **The Journal of pharmacology and experimental therapeutics**, Vol. 332, Issue 3, pp. 755-63, (2010) ([PubMed](#)).

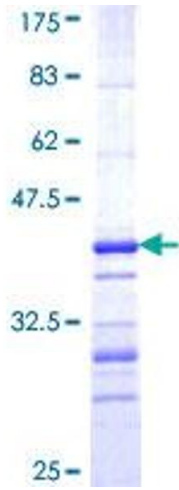


Image 1.