



[Go to Product page](#)

Datasheet for ABIN1348210

## CBX3 Protein (AA 1-183) (GST tag)

1 Image

1 Publication

### Overview

Quantity:	10 µg
Target:	CBX3
Protein Characteristics:	AA 1-183
Origin:	Human
Source:	Wheat germ
Protein Type:	Recombinant
Purification tag / Conjugate:	This CBX3 protein is labelled with GST tag.
Application:	Western Blotting (WB), ELISA, Antibody Array (AA), Affinity Purification (AP)

### Product Details

Purpose:	CBX3 (Human) Recombinant Protein (P01)
Sequence:	MASNKTTLQK MGKKQNGKSK KVEEAPEEF VVEKVLDRRV VNGKVEYFLK WKGFTDADNT WEPEENLDCP ELIEAFLNSQ KAGKEKDGTK RKSLSDSESD DSKSKKKRDA ADKPRGFARG LDPERIIGAT DSSGELMLLM KWKDSDEADL VLAKEANMKC PQIVIAFYEE RLTWHSCPED EAQ
Characteristics:	Human CBX3 full-length ORF ( AAH00954, 1 a.a. - 183 a.a.) recombinant protein with GST-tag at N-terminal.
Purification:	in vitro wheat germ expression system

### Target Details

Target:	CBX3
Alternative Name:	CBX3 ( <a href="#">CBX3 Products</a> )

## Target Details

---

Background:	Full Gene Name: chromobox homolog 3 (HP1 gamma homolog, Drosophila) Synonyms: HECH,HP1-GAMMA,HP1Hs-gamma
Gene ID:	11335

## Application Details

---

Application Notes:	Optimal working dilution should be determined by the investigator.
Comment:	Preparation method: in vitro, wheat germ expression system Product Quality tested by: 12.5% SDS-PAGE Stained with Coomassie Blue.
Restrictions:	For Research Use only

## Handling

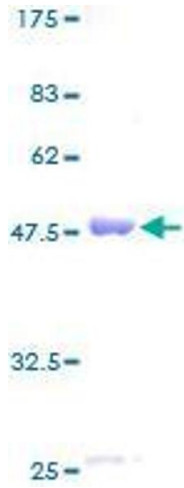
---

Buffer:	50 mM Tris-HCl, 10 mM reduced Glutathione, pH =8.0 in the elution buffer.
Handling Advice:	Aliquot to avoid repeated freezing and thawing.
Storage:	-80 °C
Storage Comment:	Best use within three months from the date of receipt of this protein.

## Publications

---

Product cited in:	Thorne, Ouboussad, Lefevre: "Heterochromatin protein 1 gamma and I?B kinase alpha interdependence during tumour necrosis factor gene transcription elongation in activated macrophages." in: <b>Nucleic acids research</b> , Vol. 40, Issue 16, pp. 7676-89, (2012) ( <a href="#">PubMed</a> ).
-------------------	---



**Image 1.**