



[Go to Product page](#)

Datasheet for ABIN1348215
CBX6 Protein (AA 1-412) (GST tag)

1 Image

Overview

Quantity:	25 µg
Target:	CBX6
Protein Characteristics:	AA 1-412
Origin:	Human
Source:	Wheat germ
Protein Type:	Recombinant
Purification tag / Conjugate:	This CBX6 protein is labelled with GST tag.
Application:	ELISA, Western Blotting (WB), Antibody Array (AA), Affinity Purification (AP)

Product Details

Purpose:	CBX6 (Human) Recombinant Protein (P01)
Sequence:	MELSAVGERV FAAESIHKRR IRKGRIEYLV KWKGWAIKYS TWEPEENILD SRLIAAFEQK ERERELYGPK KRGPKPKTFL LKARAQAEAL RISDVHFSVK PSASASSPKL HSSAAVHRLK KDIRRCHRMS RRPLRPDPQ GGSPGLRPPI SPFSETVRII NRKVKPREPK RNRIILNLKV IDKGAGGGGA GQGAGALARP KVPSRNRVIG KSKKFSESVL RTQIRHMKFG AFALYKPPPA PLVAPSPGKA EASAPGPGLL LAAPAAPYDA RSSGSSGCPS PTPQSSDPDD TLPKLLPETV SPSAPSWREP EVLDLSLPE SAATSKRAPP EVTAAAGPAP PTAPEPAGAS SEPEAGDWRP EMSPCSNWWW TDVTSNLLTV TIKEFCNPED FEKVAAGVAG AAGGGGSIGA SK
Characteristics:	Human CBX6 full-length ORF (AAH12111.1, 1 a.a. - 412 a.a.) recombinant protein with GST-tag at N-terminal.
Purification:	in vitro wheat germ expression system

Target Details

Target:	CBX6
Alternative Name:	CBX6 (CBX6 Products)
Background:	Full Gene Name: chromobox homolog 6 Synonyms:
Gene ID:	23466

Application Details

Application Notes:	Optimal working dilution should be determined by the investigator.
Comment:	Preparation method: in vitro, wheat germ expression system Product Quality tested by: 12.5% SDS-PAGE Stained with Coomassie Blue.
Restrictions:	For Research Use only

Handling

Buffer:	50 mM Tris-HCl, 10 mM reduced Glutathione, pH =8.0 in the elution buffer.
Handling Advice:	Aliquot to avoid repeated freezing and thawing.
Storage:	-80 °C
Storage Comment:	Best use within three months from the date of receipt of this protein.

Images

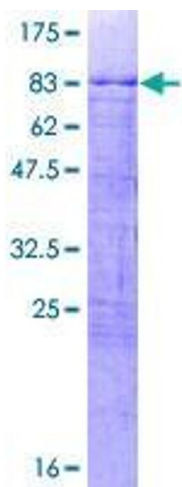


Image 1.