

Datasheet for ABIN1348221

CBY1/PGEA1 Protein (AA 18-126) (GST tag)



[Go to Product page](#)

1 Image

Overview

Quantity:	10 µg
Target:	CBY1/PGEA1 (CBY1)
Protein Characteristics:	AA 18-126
Origin:	Human
Source:	Wheat germ
Protein Type:	Recombinant
Purification tag / Conjugate:	This CBY1/PGEA1 protein is labelled with GST tag.
Application:	Western Blotting (WB), ELISA, Antibody Array (AA), Affinity Purification (AP)

Product Details

Purpose:	CBY1 (Human) Recombinant Protein (Q01)
Sequence:	SASLSNLHSL DRSTREVELG LEYGSP TMNL AGQSLKFENG QWIAETGVSG GVDRREVQRL RRRNQQLLEE NLLRLKVDI LLDMLSESTA ESHLMEKELD ELRISRKRK
Characteristics:	Human CBY1 partial ORF (NP_056188, 18 a.a. - 126 a.a.) recombinant protein with GST-tag at N-terminal.
Purification:	in vitro wheat germ expression system

Target Details

Target:	CBY1/PGEA1 (CBY1)
Alternative Name:	CBY1 (CBY1 Products)

Target Details

Background:	Full Gene Name: chibby homolog 1 (Drosophila) Synonyms: C22orf2,CBY,HS508I15A,PGEA1,PIGEA-14,PIGEA14,arb1
Gene ID:	25776
NCBI Accession:	NM_015373

Application Details

Application Notes:	Optimal working dilution should be determined by the investigator.
Comment:	Preparation method: in vitro, wheat germ expression system Product Quality tested by: 12.5% SDS-PAGE Stained with Coomassie Blue.
Restrictions:	For Research Use only

Handling

Buffer:	50 mM Tris-HCl, 10 mM reduced Glutathione, pH =8.0 in the elution buffer.
Handling Advice:	Aliquot to avoid repeated freezing and thawing.
Storage:	-80 °C
Storage Comment:	Best use within three months from the date of receipt of this protein.

Images

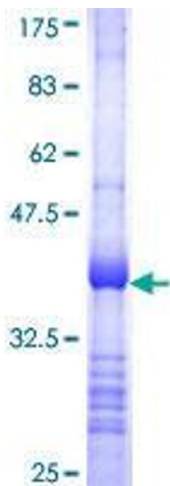


Image 1.