



[Go to Product page](#)

Datasheet for ABIN1348225

CCBE1 Protein (AA 1-215) (GST tag)

1 Image

Overview

Quantity:	25 µg
Target:	CCBE1
Protein Characteristics:	AA 1-215
Origin:	Human
Source:	Wheat germ
Protein Type:	Recombinant
Purification tag / Conjugate:	This CCBE1 protein is labelled with GST tag.
Application:	ELISA, Western Blotting (WB), Antibody Array (AA), Affinity Purification (AP)

Product Details

Purpose:	CCBE1 (Human) Recombinant Protein (P01)
Sequence:	MVKAGTCCAT CKEYYQMKQT VLQLKQKIAL LPNNAADLGK YITGDKVLAS NTYLPGPPGL PGGQGGPPGSP GPKGSPGFPG MPGPPGQPGP RGSMPGMPGPS PDLSHIKQGR RGPVGGPPGAP GRDGSKGERG APGPRGSPGP PGSFDFLLLM LADIRNDITE LQEKVFGHRT HSSAEEFFLP QEFPSYPEAM DLGSGDDHPR RTETRDRLAP RDFYP
Characteristics:	Human CCBE1 full-length ORF (AAH46645.1, 1 a.a. - 215 a.a.) recombinant protein with GST-tag at N-terminal.
Purification:	in vitro wheat germ expression system

Target Details

Target:	CCBE1
---------	-------

Target Details

Alternative Name:	CCBE1 (CCBE1 Products)
Background:	Full Gene Name: collagen and calcium binding EGF domains 1 Synonyms: FLJ30681,MGC50861
Gene ID:	147372

Application Details

Application Notes:	Optimal working dilution should be determined by the investigator.
Comment:	Preparation method: in vitro, wheat germ expression system Product Quality tested by: 12.5% SDS-PAGE Stained with Coomassie Blue.
Restrictions:	For Research Use only

Handling

Buffer:	50 mM Tris-HCl, 10 mM reduced Glutathione, pH =8.0 in the elution buffer.
Handling Advice:	Aliquot to avoid repeated freezing and thawing.
Storage:	-80 °C
Storage Comment:	Best use within three months from the date of receipt of this protein.

Images

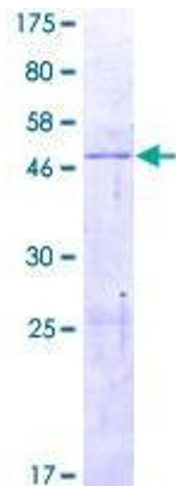


Image 1.