



[Go to Product page](#)

Datasheet for ABIN1348242

CCDC108 Protein (AA 1-163) (GST tag)

1 Image

Overview

Quantity:	10 µg
Target:	CCDC108
Protein Characteristics:	AA 1-163
Origin:	Human
Source:	Wheat germ
Protein Type:	Recombinant
Purification tag / Conjugate:	This CCDC108 protein is labelled with GST tag.
Application:	Antibody Array (AA), Affinity Purification (AP), ELISA, Western Blotting (WB)

Product Details

Purpose:	CCDC108 (Human) Recombinant Protein (P01)
Sequence:	MLTQAPSSVV RSRNSRNHTV NSGGSCLSAS TVAIPAINDS SAAMSACSTI SAQPASSMDT QMHSPPKKQER VNKRVIWGIE VAEELHWKGW ELGKETTRNL VLKNRSLKLQ KMKYRYQYKG SRTQCHSLEP RKQALFKTKQ NKQKKPLTCH IKASECLKYM QYE
Characteristics:	Human CCDC108 full-length ORF (AAH31585.1, 1 a.a. - 163 a.a.) recombinant protein with GST-tag at N-terminal.
Purification:	in vitro wheat germ expression system

Target Details

Target:	CCDC108
Alternative Name:	CCDC108 (CCDC108 Products)

Target Details

Background: Full Gene Name: coiled-coil domain containing 108
Synonyms: DKFZp43400527,MGC35338

Gene ID: 255101

Application Details

Application Notes: Optimal working dilution should be determined by the investigator.

Comment: Preparation method: in vitro, wheat germ expression system
Product Quality tested by: 12.5% SDS-PAGE Stained with Coomassie Blue.

Restrictions: For Research Use only

Handling

Buffer: 50 mM Tris-HCl, 10 mM reduced Glutathione, pH =8.0 in the elution buffer.

Handling Advice: Aliquot to avoid repeated freezing and thawing.

Storage: -80 °C

Storage Comment: Best use within three months from the date of receipt of this protein.

Images

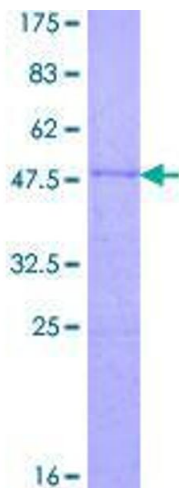


Image 1.