



[Go to Product page](#)

Datasheet for ABIN1348244

CCDC108 Protein (AA 1-271) (GST tag)

1 Image

Overview

Quantity:	10 µg
Target:	CCDC108
Protein Characteristics:	AA 1-271
Origin:	Human
Source:	Wheat germ
Protein Type:	Recombinant
Purification tag / Conjugate:	This CCDC108 protein is labelled with GST tag.
Application:	Antibody Array (AA), Affinity Purification (AP), ELISA, Western Blotting (WB)

Product Details

Purpose:	CCDC108 (Human) Recombinant Protein (P02)
Sequence:	MTLHCAFQPT HPIICFRRVA CLIHHQDPLF LDLMGTCHSD STKPAILKPQ HLTWYRTHLA RGLTLYPPDI LDAMLKEKKL AQDQNGALMI PIQDLEDMPA PQYPYIPPMT EFFFDTGSDI TIFPPPISVE PVEVDFGACP GPEAPNPVPL CLMNHTKGKI MVVWTRRSDC PFWVTPESCD VPPLKSMAMR LHFQPPHPNC LYTVELEAFA IYKVCARNER EECGVSARSLSGLVGWQEV EGSFRLHPLR ARLSLGWTVT PMSLSPPKLL A
Characteristics:	Human CCDC108 full-length ORF (AAH47637.1, 1 a.a. - 271 a.a.) recombinant protein with GST-tag at N-terminal.
Purification:	in vitro wheat germ expression system

Target Details

Target:	CCDC108
Alternative Name:	CCDC108 (CCDC108 Products)
Background:	Full Gene Name: coiled-coil domain containing 108 Synonyms: DKFZp43400527,MGC35338
Gene ID:	255101

Application Details

Application Notes:	Optimal working dilution should be determined by the investigator.
Comment:	Preparation method: in vitro, wheat germ expression system Product Quality tested by: 12.5% SDS-PAGE Stained with Coomassie Blue.
Restrictions:	For Research Use only

Handling

Buffer:	50 mM Tris-HCl, 10 mM reduced Glutathione, pH =8.0 in the elution buffer.
Handling Advice:	Aliquot to avoid repeated freezing and thawing.
Storage:	-80 °C
Storage Comment:	Best use within three months from the date of receipt of this protein.

Images

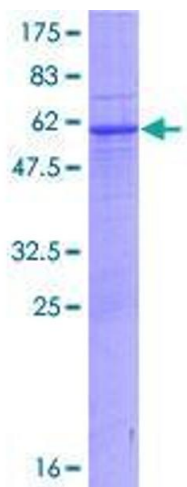


Image 1.