

Datasheet for ABIN1348246
CCDC11 Protein (AA 1-399) (GST tag)



[Go to Product page](#)

1 Image

Overview

Quantity:	25 µg
Target:	CCDC11
Protein Characteristics:	AA 1-399
Origin:	Human
Source:	Wheat germ
Protein Type:	Recombinant
Purification tag / Conjugate:	This CCDC11 protein is labelled with GST tag.
Application:	ELISA, Western Blotting (WB), Antibody Array (AA), Affinity Purification (AP)

Product Details

Purpose:	CCDC11 (Human) Recombinant Protein (P01)
Sequence:	MQLKKETIEE KKDRMREKTK LLKEKNEKER QDFVAEKLDQ QFRERCEELR VELLSEHQKK VCEERKAQIA FNEELSRQKL VEEQMFSKLW EEDRLAKEKR EAQEARRQKE LMENTRLGLN AQITSIKAQR QATQLLKEEE ARLVESNNAQ IKHENEQDML KKQKAKQETR TILQKALQER IEHIQQEYRD EQDLNMKLVQ RALQDLQEEA DKKKQKREDM IREQKIYHKY LAQRREEEKA QEKEFDRILE EDKAKKLAEK DKELRLEKEA RRQLVDEVMC TRKLQVQEKL QREAKEQEER AMEQKHINES LKELNCEEKE NFARRQLAQ EYRKQLQMCI AYQQQSQEAE KEEKRREFEA GVAANKMCLD KVQEVLSHQ VLPQNIHPMR KACPSKLPP
Characteristics:	Human CCDC11 full-length ORF (ENSP00000306594, 1 a.a. - 399 a.a.) recombinant protein with GST-tag at N-terminal.
Purification:	in vitro wheat germ expression system

Target Details

Target:	CCDC11
Alternative Name:	CCDC11 (CCDC11 Products)
Background:	Full Gene Name: coiled-coil domain containing 11 Synonyms: FLJ32743
Gene ID:	220136

Application Details

Application Notes:	Optimal working dilution should be determined by the investigator.
Comment:	Preparation method: in vitro, wheat germ expression system Product Quality tested by: 12.5% SDS-PAGE Stained with Coomassie Blue.
Restrictions:	For Research Use only

Handling

Buffer:	50 mM Tris-HCl, 10 mM reduced Glutathione, pH =8.0 in the elution buffer.
Handling Advice:	Aliquot to avoid repeated freezing and thawing.
Storage:	-80 °C
Storage Comment:	Best use within three months from the date of receipt of this protein.

Images

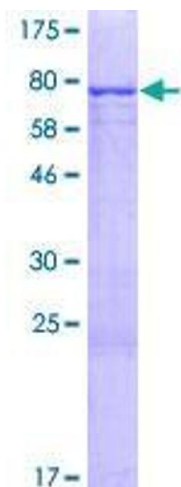


Image 1.