

Datasheet for ABIN1348247

CCDC110 Protein (AA 1-833) (GST tag)



[Go to Product page](#)

1 Image

Overview

Quantity:	25 µg
Target:	CCDC110
Protein Characteristics:	AA 1-833
Origin:	Human
Source:	Wheat germ
Protein Type:	Recombinant
Purification tag / Conjugate:	This CCDC110 protein is labelled with GST tag.
Application:	ELISA, Western Blotting (WB), Antibody Array (AA), Affinity Purification (AP)

Product Details

Purpose:	CCDC110 (Human) Recombinant Protein (P01)
Sequence:	<p>MSPEKQHREE DEVSVLLSA SKILNSSEGV KESGCSDETEY GCIAESENQI QPQSALKVLQ QQLESFQALR MQTLQNVSMV QSEISEILNK SIIIEVENPQF SSEKNLVFGT RIEKDLPTEN QEENLSMEKS HHFEDSKTLH SVEEKLSGDS VNSLPQSVNV PSQIHSEDTL TLRTSTDNLS SNIIHPSSEN SDILKNYNNF YRFLPTAPPN VMSQADTVIL DKSKITVPFL KHGFCENLDD ICHSIKQMKELQKSHDGEV ALTNELQTLQ TDPDVHRNGK YDMSPIHQDK MNFIKEENLD GNLNEDIKSK RISELEALVK KLLPFRETVS KFHVHFCRKC KKLSKSEMHR GKKNEKNNKE IPITGKNITD LKFHSRVPYR TLSFLDQTKH EMKDKERQPF LVKQGSISE NEKTSKVNSV TEQCVAKIQY LQNYLKESVQ IQKKVMELES ENLNLKSKMK PLIFTTQSLI QKVETYEKQL KNLVEEKSTI QSKLSKTEEY SKECLKEFKK IISKYNVLQG QNKTL EEKNI QLSLEKQMM EALDQLKSKE HKTQSDMAIV NNENNRMSIE MEAMKTNILL IQDEKEMLEK KTHQLLKEKS SLGNELKESQ LEIQLKEKE RLAKTEQETL LQIETVKDE KLNLETTLQE STAARQIMER EIQTYQS</p>

Product Details

TAENFLQEI KNAKSEASIY KNSLSEIGKE CEMLSKVMME TKTDNQLKE ELKKHSQENI
KFENSISRLT EDKILLENYV RSIENERDTL EFEMRHLQRE YLSLSDKICN QHNDPSKTTY
ISRREKFHFD NYTHEDTSSP QSRPLASDLK GYFKVKDRTL KHH

Characteristics: Human CCDC110 full-length ORF (NP_689988.1, 1 a.a. - 833 a.a.) recombinant protein with GST-tag at N-terminal.

Purification: in vitro wheat germ expression system

Target Details

Target: CCDC110

Alternative Name: CCDC110 ([CCDC110 Products](#))

Background: Full Gene Name: coiled-coil domain containing 110
Synonyms: KM-HN-1, KMHN1, MGC33607

Gene ID: 256309

NCBI Accession: [NM_152775](#)

Application Details

Application Notes: Optimal working dilution should be determined by the investigator.

Comment: Preparation method: in vitro, wheat germ expression system
Product Quality tested by: 12.5% SDS-PAGE Stained with Coomassie Blue.

Restrictions: For Research Use only

Handling

Buffer: 50 mM Tris-HCl, 10 mM reduced Glutathione, pH =8.0 in the elution buffer.

Handling Advice: Aliquot to avoid repeated freezing and thawing.

Storage: -80 °C

Storage Comment: Best use within three months from the date of receipt of this protein.

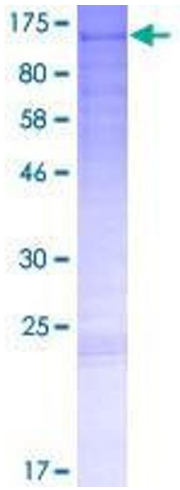


Image 1.