

Datasheet for ABIN1348248

CCDC112 Protein (AA 1-446) (GST tag)



[Go to Product page](#)

1 Image

Overview

Quantity:	10 µg
Target:	CCDC112
Protein Characteristics:	AA 1-446
Origin:	Human
Source:	Wheat germ
Protein Type:	Recombinant
Purification tag / Conjugate:	This CCDC112 protein is labelled with GST tag.
Application:	ELISA, Western Blotting (WB), Antibody Array (AA), Affinity Purification (AP)

Product Details

Purpose:	CCDC112 (Human) Recombinant Protein (P01)
Sequence:	MEKDKHSHFY NQKSDFRIEH SMLEELNKL IHSRKTERAK IQQLAKIHN NVKKLQHQLK DVKPTPDFVE KLREMMEEIE NAINTFKEEQ RLIYEELIKE EKTTNELSA ISRKIDTVAL GNSETEKAFR AISSKVPVDK VTPSTLPEEV LDFEKFLQQT GGRQGAWDDY DHQNFVKVRN KHKGKPTFME EVLEHLPGKT QDEVQQHEKW YQKFLALEER KKESIQIWKT KKQKREEIF KLKEKADNTP VLFHNKQEDN QKQKEEQRKK QKLAVEAWKK QKSIEMSMKC ASQLKEEEEEK EKKHQKERQR QFKLKLLLES YTQKKEQEE FLRLEKEIRE NAEKAEKRKN AADGISRFQE RDLHKLELKI LDRQAKEDEK SQKQRRLAKL KEKVENNVSR DPSRLYKPTK GWEERTKKIG PTGSGPLLHI PHRAIPTWRQ GIQRRV
Characteristics:	Human CCDC112 full-length ORF (NP_689762.1, 1 a.a. - 446 a.a.) recombinant protein with GST-tag at N-terminal.

Product Details

Purification: in vitro wheat germ expression system

Target Details

Target: CCDC112

Alternative Name: CCDC112 ([CCDC112 Products](#))

Background: Full Gene Name: coiled-coil domain containing 112
Synonyms: MBC1,MGC39633

Gene ID: 153733

NCBI Accession: [NM_152549](#)

Application Details

Application Notes: Optimal working dilution should be determined by the investigator.

Comment: Preparation method: in vitro, wheat germ expression system
Product Quality tested by: 12.5% SDS-PAGE Stained with Coomassie Blue.

Restrictions: For Research Use only

Handling

Buffer: 50 mM Tris-HCl, 10 mM reduced Glutathione, pH =8.0 in the elution buffer.

Handling Advice: Aliquot to avoid repeated freezing and thawing.

Storage: -80 °C

Storage Comment: Best use within three months from the date of receipt of this protein.

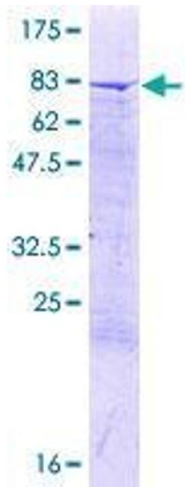


Image 1.