

Datasheet for ABIN1348250

## CCDC113 Protein (AA 1-377) (GST tag)



[Go to Product page](#)

### 1 Image

#### Overview

Quantity:	25 µg
Target:	CCDC113
Protein Characteristics:	AA 1-377
Origin:	Human
Source:	Wheat germ
Protein Type:	Recombinant
Purification tag / Conjugate:	This CCDC113 protein is labelled with GST tag.
Application:	ELISA, Western Blotting (WB), Antibody Array (AA), Affinity Purification (AP)

#### Product Details

Purpose:	CCDC113 (Human) Recombinant Protein (P01)
Sequence:	MTDDESESVL SDSHEGSELE LPVIQLCGLV EELSYVNSAL KTETEMFEKY YAKLEPRDQR PPRLSEIKIS AADYAQFRGR RRSKSRTGMD RGVGLTADQK LELVQKEVAD MKDDL RHTRA NAERDLQHHE AIIEEAEIRW SEVSREVHEF EKDILKAISK KKGSIATQK VMKYIEDMNR RRDNMKEKLR LKNVSLKVQR KKMLLQLRQK EEVSEALHDV DFQQLKIENA QFLETIERN QELTQLKSS GNTLQVLNAY KSKLHKAMEI YLNLDKEILL RKELLEKIEK ETLQVEEDRA KAEAVNKRLR KQLAEFRAPQ VMTYVREKIL NADLEKSIRM WERKVEIAEM SLKGHRKAWN RMKITNEQLQ ADYLAGK
Characteristics:	Human CCDC113 full-length ORF ( NP_054876.2, 1 a.a. - 377 a.a.) recombinant protein with GST-tag at N-terminal.
Purification:	in vitro wheat germ expression system

## Target Details

Target:	CCDC113
Alternative Name:	CCDC113 ( <a href="#">CCDC113 Products</a> )
Background:	Full Gene Name: coiled-coil domain containing 113 Synonyms: DKFZp434N1418,FLJ23555,HSPC065
Gene ID:	29070
NCBI Accession:	<a href="#">NM_014157</a>

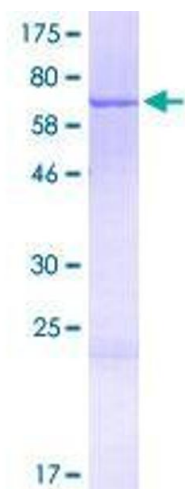
## Application Details

Application Notes:	Optimal working dilution should be determined by the investigator.
Comment:	Preparation method: in vitro, wheat germ expression system Product Quality tested by: 12.5% SDS-PAGE Stained with Coomassie Blue.
Restrictions:	For Research Use only

## Handling

Buffer:	50 mM Tris-HCl, 10 mM reduced Glutathione, pH =8.0 in the elution buffer.
Handling Advice:	Aliquot to avoid repeated freezing and thawing.
Storage:	-80 °C
Storage Comment:	Best use within three months from the date of receipt of this protein.

## Images



**Image 1.**