



[Go to Product page](#)

Datasheet for ABIN1348255

## CCDC117 Protein (AA 1-170) (GST tag)

### 1 Image

#### Overview

Quantity:	10 µg
Target:	CCDC117
Protein Characteristics:	AA 1-170
Origin:	Human
Source:	Wheat germ
Protein Type:	Recombinant
Purification tag / Conjugate:	This CCDC117 protein is labelled with GST tag.
Application:	ELISA, Western Blotting (WB), Antibody Array (AA), Affinity Purification (AP)

#### Product Details

Purpose:	CCDC117 (Human) Recombinant Protein (P01)
Sequence:	MAALGRPFSG LSIPGILDVI CEEMDQTTGE PQCEVARRKL QEIEDRIIDE DEEVEADRNV NHLPSLVLSLSD TMKTGLKREF DEVFTKKMIE SMSRPSMELV LWKPLPELLS DKPKPSSNTK NYTGESQAKH VAAGTAFPQR TELFSEPRPT GMSLYNSLET ATSTEEEMEL
Characteristics:	Human CCDC117 full-length ORF ( CAK54443.1, 1 a.a. - 170 a.a.) recombinant protein with GST-tag at N-terminal.
Purification:	in vitro wheat germ expression system

#### Target Details

Target:	CCDC117
Alternative Name:	CCDC117 ( <a href="#">CCDC117 Products</a> )

## Target Details

Background: Full Gene Name: coiled-coil domain containing 117  
Synonyms: FLJ33814,dJ366L4.1

Gene ID: 150275

## Application Details

Application Notes: Optimal working dilution should be determined by the investigator.

Comment: Preparation method: in vitro, wheat germ expression system  
Product Quality tested by: 12.5% SDS-PAGE Stained with Coomassie Blue.

Restrictions: For Research Use only

## Handling

Buffer: 50 mM Tris-HCl, 10 mM reduced Glutathione, pH =8.0 in the elution buffer.

Handling Advice: Aliquot to avoid repeated freezing and thawing.

Storage: -80 °C

Storage Comment: Best use within three months from the date of receipt of this protein.

## Images

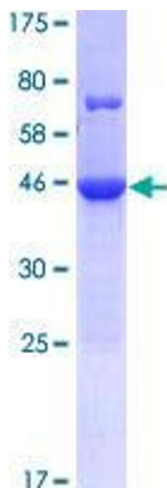


Image 1.