

Datasheet for ABIN1348264

CCDC130 Protein (AA 1-396) (GST tag)



[Go to Product page](#)

1 Image

Overview

Quantity:	25 µg
Target:	CCDC130
Protein Characteristics:	AA 1-396
Origin:	Human
Source:	Wheat germ
Protein Type:	Recombinant
Purification tag / Conjugate:	This CCDC130 protein is labelled with GST tag.
Application:	ELISA, Western Blotting (WB), Antibody Array (AA), Affinity Purification (AP)

Product Details

Purpose:	CCDC130 (Human) Recombinant Protein (P01)
Sequence:	MGERKGVNKY YPPDFNPEKH GSLNRYHNSH PLRERARKLS QGILIIRFEM PYNIWCDGCK NHIGMGVRYN AEKKKVGNY TTPYRFRMK CHLCVNYIEM QTDPANCDYV IVSGAQRKEE RWDMDADNEQV LTTEHEKKQK LETDAMFRLE HGEADRSTLK KALPTLSHIQ EAQSAWKDDF ALNSMLRRRF REKKKAIQEE EERDQALQAK ASLTIPLVPE TEDDRKLAAL LKFHTLDSYE DKQKLRTEI ISRSWFPSAP GSASSKVSG VLKLAQSRR TALATSPITV GDLGIVRRRS RDVPESPQHA ADTPKSGEPR VPEEAAQDRP MSPGDCPPET TETPKCSSPR GQEGSRQDKP LSPAGSSQEA ADTPDTRHPC SLGSSLVADY SDSESE
Characteristics:	Human CCDC130 full-length ORF (NP_110445.1, 1 a.a. - 396 a.a.) recombinant protein with GST-tag at N-terminal.
Purification:	in vitro wheat germ expression system

Target Details

Target:	CCDC130
Alternative Name:	CCDC130 (CCDC130 Products)
Background:	Full Gene Name: coiled-coil domain containing 130 Synonyms: MGC10471
Gene ID:	81576
NCBI Accession:	NM_030818

Application Details

Application Notes:	Optimal working dilution should be determined by the investigator.
Comment:	Preparation method: in vitro, wheat germ expression system Product Quality tested by: 12.5% SDS-PAGE Stained with Coomassie Blue.
Restrictions:	For Research Use only

Handling

Buffer:	50 mM Tris-HCl, 10 mM reduced Glutathione, pH =8.0 in the elution buffer.
Handling Advice:	Aliquot to avoid repeated freezing and thawing.
Storage:	-80 °C
Storage Comment:	Best use within three months from the date of receipt of this protein.

Images

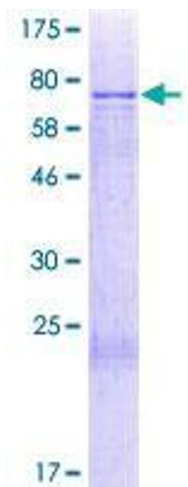


Image 1.