

Datasheet for ABIN1348265

Syndetin/VPS50 Protein (AA 1-327) (GST tag)



[Go to Product page](#)

1 Image

Overview

Quantity:	10 µg
Target:	Syndetin/VPS50 (CCDC132)
Protein Characteristics:	AA 1-327
Origin:	Human
Source:	Wheat germ
Protein Type:	Recombinant
Purification tag / Conjugate:	This Syndetin/VPS50 protein is labelled with GST tag.
Application:	ELISA, Western Blotting (WB), Antibody Array (AA), Affinity Purification (AP)

Product Details

Purpose:	CCDC132 (Human) Recombinant Protein (P01)
Sequence:	<p>MQKIKSLMTR QGLKSPQESL SDLGAIESLR VPGKEEFREL REQSPDPQAE QELINSIEQV YFSVDSFDIV KYELEKLPPV LNLQELEAYR DKLKQQQAAV SKKVADLILE KQPAYVKELE RVTSLQTGLQ LAAVICTNQR RHLNIAKEGF TQASLGLLAN QRKRQLLIGL LKSLRTIKTL QRTDVRLESEM LEEEDYPGAI QLCLECQKAA STFKHYSCIS ELNSKLQDTL EQIEEQLDVA LSKICKNFDI NHYTKVQQAY RLLGKTQTAM DQLHMHFTQA IHNTVFQVVL GYVELCAGNT DTKFQKLQYK DLCTVCSDLI TIHISLL</p>
Characteristics:	Human CCDC132 full-length ORF (NP_078829.1, 1 a.a. - 327 a.a.) recombinant protein with GST-tag at N-terminal.
Purification:	in vitro wheat germ expression system

Target Details

Target:	Syndetin/VPS50 (CCDC132)
Alternative Name:	CCDC132 (CCDC132 Products)
Background:	Full Gene Name: coiled-coil domain containing 132 Synonyms: FLJ20097,FLJ23581,KIAA1861,MGC176659
Gene ID:	55610
NCBI Accession:	NM_024553

Application Details

Application Notes:	Optimal working dilution should be determined by the investigator.
Comment:	Preparation method: in vitro, wheat germ expression system Product Quality tested by: 12.5% SDS-PAGE Stained with Coomassie Blue.
Restrictions:	For Research Use only

Handling

Buffer:	50 mM Tris-HCl, 10 mM reduced Glutathione, pH =8.0 in the elution buffer.
Handling Advice:	Aliquot to avoid repeated freezing and thawing.
Storage:	-80 °C
Storage Comment:	Best use within three months from the date of receipt of this protein.

Images

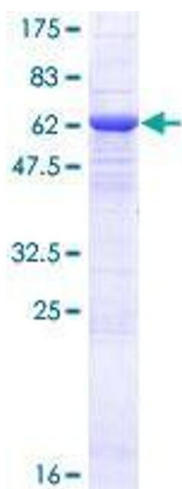


Image 1.