



[Go to Product page](#)

Datasheet for ABIN1348269

CCDC137 Protein (AA 1-289) (GST tag)

1 Image

Overview

Quantity:	10 µg
Target:	CCDC137
Protein Characteristics:	AA 1-289
Origin:	Human
Source:	Wheat germ
Protein Type:	Recombinant
Purification tag / Conjugate:	This CCDC137 protein is labelled with GST tag.
Application:	ELISA, Western Blotting (WB), Antibody Array (AA), Affinity Purification (AP)

Product Details

Purpose:	CCDC137 (Human) Recombinant Protein (P01)
Sequence:	MAGAGRGA AV SRVQAGPGSP RRARGRQQVQ PLGKQRPAPW PGLRSKEKKK VNCKPKNQDE QEIPFRLREI MRSRQEMKNP ISNKKRKKAA QVTFRKTLEK EAKGEEPDI VPKFKQRKGE SDGAYIHRMQ QEAQHVLFLS KNQAIRQPEV QAAPKEKSEQ KKAKKAFQKR RLDKVRRKKE EKAADRLEQE LLRDTVKFGE VVLQPELTA RPQRSVSKDQ PGRRSQMLRM LLSPGGVSQP LTASLARQRI VEEERERAVQ AYRALKQRQQ QLHGERPHLT SRKKPEPQL
Characteristics:	Human CCDC137 full-length ORF (AAH09369.1, 1 a.a. - 289 a.a.) recombinant protein with GST-tag at N-terminal.
Purification:	in vitro wheat germ expression system

Target Details

Target:	CCDC137
Alternative Name:	CCDC137 (CCDC137 Products)
Background:	Full Gene Name: coiled-coil domain containing 137 Synonyms: MGC16597
Gene ID:	339230

Application Details

Application Notes:	Optimal working dilution should be determined by the investigator.
Comment:	Preparation method: in vitro, wheat germ expression system Product Quality tested by: 12.5% SDS-PAGE Stained with Coomassie Blue.
Restrictions:	For Research Use only

Handling

Buffer:	50 mM Tris-HCl, 10 mM reduced Glutathione, pH =8.0 in the elution buffer.
Handling Advice:	Aliquot to avoid repeated freezing and thawing.
Storage:	-80 °C
Storage Comment:	Best use within three months from the date of receipt of this protein.

Images

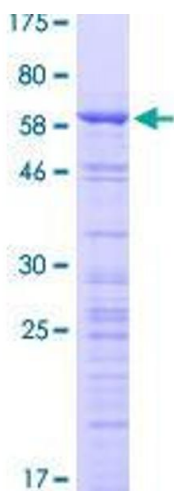


Image 1.