

Datasheet for ABIN1348278

## CCDC155 Protein (AA 1-562) (GST tag)



[Go to Product page](#)

### 1 Image

#### Overview

Quantity:	10 µg
Target:	CCDC155
Protein Characteristics:	AA 1-562
Origin:	Human
Source:	Wheat germ
Protein Type:	Recombinant
Purification tag / Conjugate:	This CCDC155 protein is labelled with GST tag.
Application:	ELISA, Western Blotting (WB), Antibody Array (AA), Affinity Purification (AP)

#### Product Details

Purpose:	FLJ32658 (Human) Recombinant Protein (P01)
Sequence:	MDLPEGVGG PTAEMYLRER PEEARLGMPV SLEEQILNST FEACDPQRTG TVAVAQVLAY LEAVTGQGPQ DARLQTLANS LDPNGEGPKA TVDLDTFLVV MRDWIAACQL HGGLELEEEET AFQGALTSQQ LPSGCPEAEE PANLESFGGE DPRPELQATA DLLSSLEDLE LSNRRLVGEN AKLQRSMETA EEGSARLGEE ILALRKQLHS TQQALQFAKA MDEELEDLKT LARSLEEQNR SLLAQRQAE KEQQHLVAEM ETLQEENGKL LAERDGVKKR SQELAMEKDT LKRQLFECEH LICQRDTILS ERTRDVESLA QTLEEYRVTT QELRLEISRL EEQLSQTYES PDELPEGAQL RRVGWTELLP PSLGLEIEAI RQKQEVATAD LSNPLCGVWQ WEEVIHETSE ETEFPSEAPA GGQRNFQGE AHPEEGRKEP SMWLTRREEE EDAESQVTAD LPVPLGAPRP GDIPENPPER PARRELQAL VPVMKKLVPV RRRAWGQLCL PPQRLRVTRH PLIPAPVLGL LLLLLLSVLL LGSPPTWP HLQLCYLQPP PV
Characteristics:	Human FLJ32658 full-length ORF ( AAH29811.1, 1 a.a. - 562 a.a.) recombinant protein with

## Product Details

---

GST-tag at N-terminal.

Purification: in vitro wheat germ expression system

## Target Details

---

Target: CCDC155

Alternative Name: CCDC155 ([CCDC155 Products](#))

Background: Full Gene Name: coiled-coil domain containing 155  
Synonyms: DKFZp434A2223,FLJ32658

Gene ID: 147872

## Application Details

---

Application Notes: Optimal working dilution should be determined by the investigator.

Comment: Preparation method: in vitro, wheat germ expression system  
Product Quality tested by: 12.5% SDS-PAGE Stained with Coomassie Blue.

Restrictions: For Research Use only

## Handling

---

Buffer: 50 mM Tris-HCl, 10 mM reduced Glutathione, pH =8.0 in the elution buffer.

Handling Advice: Aliquot to avoid repeated freezing and thawing.

Storage: -80 °C

Storage Comment: Best use within three months from the date of receipt of this protein.

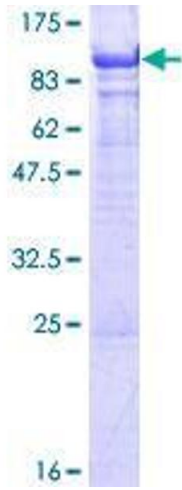


Image 1.