

Datasheet for ABIN1348289

CCDC36 Protein (AA 1-584) (GST tag)



[Go to Product page](#)

1 Image

Overview

Quantity:	25 µg
Target:	CCDC36
Protein Characteristics:	AA 1-584
Origin:	Human
Source:	Wheat germ
Protein Type:	Recombinant
Purification tag / Conjugate:	This CCDC36 protein is labelled with GST tag.
Application:	ELISA, Western Blotting (WB), Antibody Array (AA), Affinity Purification (AP)

Product Details

Purpose:	CCDC36 (Human) Recombinant Protein (P01)
Sequence:	MLSIPSGSGN KKSSNWNQ NDYSSLSDSQ FLFGSQFCPE NSETLSAPLD FGAHLRHSKQ SQQNYLEGEPI SIFTKYQTKP QLFGGDIKDG GLFPPPLSVG KSKGLLEQFE EKKKRAKDKC DSETLYNFVS NVRESILRLQ TSVEKSEDHL SSRSQSILDS LETVAKTLQE TIQAQNDLVF EAVQDKGNME QAILEMKKRF EARQGEFIEM KSNLKHLEVL VAQQSQEFQQ LCEQLGQLNV PSVLAELKRL ISVPPVKDSA SQTSPPLAQS LNLTRQEKYT SEKPVWQAQ ALPAAWNPGM GSLQPGFVDV WEGEAKNDDL QEEAALPAFG SHERNRHVKD KVVQTNCKNW AVTKTGAKNH GSSVPGHKIP SDRDLVSQGA SQLTSLEINF STSIKNACQK YQAQSMFLCD PREHLVIKQK DGTVEMRGKD KKQQRKAHR AHRGRLIASK QKQIPIQTCK FNSKYQSPQP AISVPQSPFL GQQEPRAQPL HLQCPRSPRK PVCPIGGTV MPNKTVRAVQ GRLLQLSRCS SQDNWLLSSS SQGDHQMSWF SDLNLGCSET PLCKEAGKNL LYDLGFDSSD DDGF
Characteristics:	Human CCDC36 full-length ORF (NP_835467.1, 1 a.a. - 584 a.a.) recombinant protein with GST

Product Details

tag at N-terminal.

Purification: in vitro wheat germ expression system

Target Details

Target: CCDC36

Alternative Name: CCDC36 ([CCDC36 Products](#))

Background: Full Gene Name: coiled-coil domain containing 36
Synonyms: FLJ25320

Gene ID: 339834

NCBI Accession: [NM_178173](#)

Application Details

Application Notes: Optimal working dilution should be determined by the investigator.

Comment: Preparation method: in vitro, wheat germ expression system
Product Quality tested by: 12.5% SDS-PAGE Stained with Coomassie Blue

Restrictions: For Research Use only

Handling

Buffer: 50 mM Tris-HCl, 10 mM reduced Glutathione, pH =8.0 in the elution buffer.

Handling Advice: Aliquot to avoid repeated freezing and thawing.

Storage: -80 °C

Storage Comment: Best use within three months from the date of receipt of this protein.

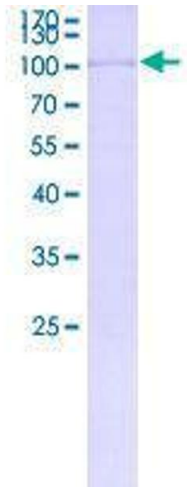


Image 1.