



[Go to Product page](#)

Datasheet for ABIN1348296

TACO1 Protein (AA 1-297) (GST tag)

1 Image

Overview

Quantity:	10 µg
Target:	TACO1 (CCDC44)
Protein Characteristics:	AA 1-297
Origin:	Human
Source:	Wheat germ
Protein Type:	Recombinant
Purification tag / Conjugate:	This TACO1 protein is labelled with GST tag.
Application:	ELISA, Western Blotting (WB), Antibody Array (AA), Affinity Purification (AP)

Product Details

Purpose:	CCDC44 (Human) Recombinant Protein (P01)
Sequence:	MSAWAAASLS RAAARCLLAR GPGVRAAPPR DPRPSHPEPR GCGAAPGRTL HFTAAVPAGH NKWSKVRHIK GPKDVERSRI FSKLCLNIRL AVKEGGPNPE HNSNLANILE VCRSKHMPKS TIETALKMEK SKDTYLLYEG RGPGGSSLLI EALSNSSHKC QADIRHILNK NGGVMAVGAR HSFDKKGIV VEVEDREKKA VNLERALEMA IEAGAEDVKE TEDEEERNVF KFCIDASSLH QVRKKLDSLGLCSVSCALEF IPNSKVQLAE PDLEQAAHLI QALSNHEDVI HUYDNIE
Characteristics:	Human CCDC44 full-length ORF (NP_057444.2, 1 a.a. - 297 a.a.) recombinant protein with GST-tag at N-terminal.
Purification:	in vitro wheat germ expression system

Target Details

Target:	TAC01 (CCDC44)
Alternative Name:	CCDC44 (CCDC44 Products)
Background:	Full Gene Name: coiled-coil domain containing 44 Synonyms:
Gene ID:	51204
NCBI Accession:	NM_016360

Application Details

Application Notes:	Optimal working dilution should be determined by the investigator.
Comment:	Preparation method: in vitro, wheat germ expression system Product Quality tested by: 12.5% SDS-PAGE Stained with Coomassie Blue.
Restrictions:	For Research Use only

Handling

Buffer:	50 mM Tris-HCl, 10 mM reduced Glutathione, pH =8.0 in the elution buffer.
Handling Advice:	Aliquot to avoid repeated freezing and thawing.
Storage:	-80 °C
Storage Comment:	Best use within three months from the date of receipt of this protein.

Images

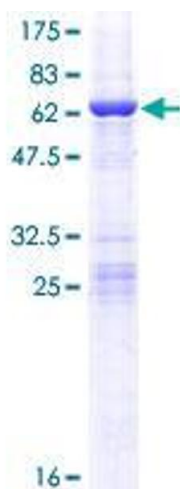


Image 1.