



[Go to Product page](#)

Datasheet for ABIN1348298

CWC25 Protein (AA 1-425) (GST tag)

1 Image

Overview

Quantity:	25 µg
Target:	CWC25
Protein Characteristics:	AA 1-425
Origin:	Human
Source:	Wheat germ
Protein Type:	Recombinant
Purification tag / Conjugate:	This CWC25 protein is labelled with GST tag.
Application:	ELISA, Western Blotting (WB), Antibody Array (AA), Affinity Purification (AP)

Product Details

Purpose:	CCDC49 (Human) Recombinant Protein (P01)
Sequence:	MGGDLNLKK SWHPQTLRNV EKVWKAQKH EAERKKIEEL QRELREERAR EEMQRYAEDV GAVKKKEEKL DWMYQGPGBM VNRDEYLLGR PIDKYVFEKM EEKEAGCSSE TGLLPGSIFA PSGANLLDM ASKIREDFPLF IIRKKEEEKK REVLNNPVKM KIKELLQMS LEKKEKKKKK EKKKKHKKHK HRSSSSDRSS SEDEHSAGRS QKKMANSSPV LSKVPGYGLQ VRNSDRNQGL QGPLTAEQKR GHGMKNHSRS RSSHSPPRH ASKKSTREAG SRDRRSRLG RRSRSPRPSK LHNSKVNRR TGQTRSPSPK KEVYQRRHAP GYTRKLSAEE LERKRQEMME NAKWREEERL NILKRHAKDE EREQRLEKLD SRDGKFIHRM KLESASTSSL EDRVKRNIYS LQRTSVALEK NFMKR
Characteristics:	Human CCDC49 full-length ORF (NP_060218.1, 1 a.a. - 425 a.a.) recombinant protein with GST-tag at N-terminal.
Purification:	in vitro wheat germ expression system

Target Details

Target:	CWC25
Alternative Name:	CCDC49 (CWC25 Products)
Background:	Full Gene Name: coiled-coil domain containing 49 Synonyms: DKFZp779M0968,FLJ20291
Gene ID:	54883
NCBI Accession:	NM_017748

Application Details

Application Notes:	Optimal working dilution should be determined by the investigator.
Comment:	Preparation method: in vitro, wheat germ expression system Product Quality tested by: 12.5% SDS-PAGE Stained with Coomassie Blue.
Restrictions:	For Research Use only

Handling

Buffer:	50 mM Tris-HCl, 10 mM reduced Glutathione, pH =8.0 in the elution buffer.
Handling Advice:	Aliquot to avoid repeated freezing and thawing.
Storage:	-80 °C
Storage Comment:	Best use within three months from the date of receipt of this protein.

Images

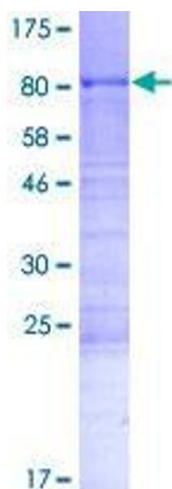


Image 1.