



[Go to Product page](#)

Datasheet for ABIN1348316

CCDC68 Protein (AA 1-335) (GST tag)

1 Image

Overview

Quantity:	25 µg
Target:	CCDC68
Protein Characteristics:	AA 1-335
Origin:	Human
Source:	Wheat germ
Protein Type:	Recombinant
Purification tag / Conjugate:	This CCDC68 protein is labelled with GST tag.
Application:	ELISA, Western Blotting (WB), Antibody Array (AA), Affinity Purification (AP)

Product Details

Purpose:	CCDC68 (Human) Recombinant Protein (P01)
Sequence:	MTT ₁ VT ₂ VT ₃ TE ₄ I PPRDKMEDNS ALYESTSAHI IEET ₁ EY ₂ V ₃ V ₄ KK ₅ I RTTL ₁ Q ₂ K ₃ IR ₄ T ₅ Q MFKDEIRHDS TNHKLDAKHC GNLQQGSDSE MDPSCCSLDL LMKKIKGKDL QLLEMNKENE VLKIKLQASR EAGAAALRNV AQR ₁ LFEN ₂ Y ₃ Q ₄ T QSEEV ₁ R ₂ KK ₃ Q ₄ E DSK ₁ QL ₂ L ₃ Q ₄ V ₅ N ₆ K LEKE ₁ Q ₂ K ₃ L ₄ Q ₅ H VENLNQVAEK LEEKHSQITE LENLVQRMEK EKRTLLERKL SLENKLLQLK SSATY ₁ G ₂ K ₃ SC ₄ Q DLQREISILQ EQISHLQFVI HSQH ₁ Q ₂ N ₃ L ₄ RS ₅ V IQEMEGLKNN LKEQDKRIEN LREKVNILEA QNKELKTQVA LSSETPRTKV SKAVSTSELK TEGVSPYLML IRLRK
Characteristics:	Human CCDC68 full-length ORF (NP_079490.1, 1 a.a. - 335 a.a.) recombinant protein with GST-tag at N-terminal.
Purification:	in vitro wheat germ expression system

Target Details

Target:	CCDC68
Alternative Name:	CCDC68 (CCDC68 Products)
Background:	Full Gene Name: coiled-coil domain containing 68 Synonyms: FLJ25368,SE57-1
Gene ID:	80323
NCBI Accession:	NM_025214

Application Details

Application Notes:	Optimal working dilution should be determined by the investigator.
Comment:	Preparation method: in vitro, wheat germ expression system Product Quality tested by: 12.5% SDS-PAGE Stained with Coomassie Blue.
Restrictions:	For Research Use only

Handling

Buffer:	50 mM Tris-HCl, 10 mM reduced Glutathione, pH =8.0 in the elution buffer.
Handling Advice:	Aliquot to avoid repeated freezing and thawing.
Storage:	-80 °C
Storage Comment:	Best use within three months from the date of receipt of this protein.

Images

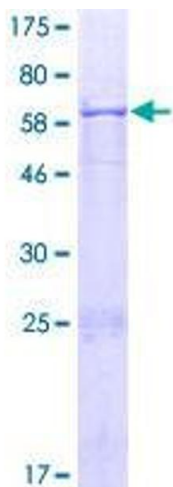


Image 1.