



[Go to Product page](#)

Datasheet for ABIN1348317

## CCDC69 Protein (AA 1-296) (GST tag)

### 1 Image

#### Overview

Quantity:	10 µg
Target:	CCDC69
Protein Characteristics:	AA 1-296
Origin:	Human
Source:	Wheat germ
Protein Type:	Recombinant
Purification tag / Conjugate:	This CCDC69 protein is labelled with GST tag.
Application:	ELISA, Western Blotting (WB), Antibody Array (AA), Affinity Purification (AP)

#### Product Details

Purpose:	CCDC69 (Human) Recombinant Protein (P01)
Sequence:	MGCRHSRLSS CKPPKKKRQE PEPEQPPRPE PHELGPLNGD TAITVQLCAS EEAERHQKDI TRILQQHEEE KKKWAQQVEK ERELELRDRL DEQQRVLEGK NEEALQVLRA SYEQEKEALT HSFREASSTQ QETIDRLTSQ LEAFQAKMKR VEESILSRNY KKHQDYGSP SQFWEQELES LHFVIEMKNE RIHELDRRLI LMETVKEKNL ILEEKITTLQ QENEDLHVRS RNQVVLSRQL SEDLTLLTREA LEKEVQLRRQ LQQEKEELLY RVLGANASPA FPLAPVTPTE VSFLAT
Characteristics:	Human CCDC69 full-length ORF ( NP_056436.2, 1 a.a. - 296 a.a.) recombinant protein with GST-tag at N-terminal.
Purification:	in vitro wheat germ expression system

## Target Details

Target:	CCDC69
Alternative Name:	CCDC69 ( <a href="#">CCDC69 Products</a> )
Background:	Full Gene Name: coiled-coil domain containing 69 Synonyms: DKFZp434C171,FLJ13705
Gene ID:	26112
NCBI Accession:	<a href="#">NM_015621</a>

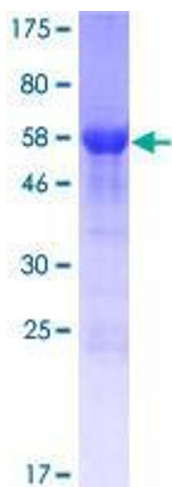
## Application Details

Application Notes:	Optimal working dilution should be determined by the investigator.
Comment:	Preparation method: in vitro, wheat germ expression system Product Quality tested by: 12.5% SDS-PAGE Stained with Coomassie Blue.
Restrictions:	For Research Use only

## Handling

Buffer:	50 mM Tris-HCl, 10 mM reduced Glutathione, pH =8.0 in the elution buffer.
Handling Advice:	Aliquot to avoid repeated freezing and thawing.
Storage:	-80 °C
Storage Comment:	Best use within three months from the date of receipt of this protein.

## Images



**Image 1.**